



# HIGH POINTE COMMUNITY PRICE LIST

## PHASE 1 HOME FLOORPLANS

PLAN	BED	BATH	DEN	GARAGE	SF	PRICE
Cordella Jem	3	2	N	3 BAY	1,899	\$531,990
Allura	2	2	Y	2 BAY	2,114	\$539,990
Cordella Grande	3	3	Y	3 BAY	2,190	\$542,990
Capistrano Grande	3	3	Y	3 BAY	2,361	\$569,990
Aurora 25	3	3	Y	2 BAY	2,515	\$580,990
Venetian	3	3	Y	3 BAY	2,584	\$595,990
Seraphina 23	3	3.5	Y	3 BAY	2,737	\$606,990
Weston	3	3	Y	2 BAY	2,594	\$612,990
Weston Signature	4	3.5	Y	2 BAY	2,844	\$638,990

## PHASE 2 HOME FLOORPLANS

PLAN	BED	BATH	DEN	GARAGE	SF	PRICE
Cordella Jem	3	2	N	3 BAY	1,899	\$563,990
Allura	2	2	Y	2 BAY	2,114	\$571,990
Cordella Grande	3	3	Y	3 BAY	2,190	\$574,990
Capistrano Grande	3	3	Y	3 BAY	2,361	\$601,990
Aurora 25	3	3	Y	2 BAY	2,515	\$617,990
Venetian	3	3	Y	3 BAY	2,584	\$627,990
Seraphina 23	3	3.5	Y	3 BAY	2,737	\$633,990
Weston	3	3	Y	2 BAY	2,594	\$644,990
Weston Signature	4	3.5	Y	2 BAY	2,844	\$670,990

## INVENTORY HOMES

PLAN	BED	BATH	DEN	GARAGE	SF	PRICE
Cordella Grande 6370 Seclusion Terrace, Vero Beach, FL 32967	3	3	Y	3 BAY	2,190	\$618,753
Aurora 25 6382 High Pointe Circle, Vero Beach, FL 32967 Lot: 199	3	3	Y	2 BAY	2,515	\$655,924
Venetian 6358 High Pointe Circle, Vero Beach, FL 32967 Lot: 192	3	3	Y	3 BAY	2,584	\$668,447
Aurora 25 6418 High Pointe Circle, Vero Beach, FL 32967 Lot: 171	3	3	Y	2 BAY	2,515	\$673,501



Seller reserves the right to make changes or modifications to plans, maps, plan specifications, materials, Features, and colors without notice. Prices are subject to change without notice. Maps, plans, landscaping and elevation renderings are artist's conceptions, not to scale, and may not accurately depict the homes or lots as they are built. This brochure is for illustrative purposes only and not a part of a legal contract. Lic. #CBC051145



## HIGH POINTE COMMUNITY PRICE LIST

Capistrano Grande 6482 High Pointe Circle, Vero Beach, FL 32967 Lot: 181	3	3	Y	2 BAY	2,559	\$703,625
---	---	---	---	-------	-------	-----------

All plans in Phase 2 will include upgraded features including Level 2 Cabinets, Gourmet Kitchen Package and a Hood Package which included a combo wall oven/microwave.

Lakefront, oversized and select homesites are limited, unique and will have a lot premium associated. Not all plans are designed to fit on every homesite. Contact your salesperson for information.

To learn more about these homes, please contact  
Nicole Morris at 772.257.1100 or e-mail [nicolem@ghohomes.com](mailto:nicolem@ghohomes.com)





# HIGH POINTE COMMUNITY PROFILE

## COMMUNITY OVERVIEW

### Total Number of Homes:

278 homesites across 4 community phases

### Size of Typical Lots:

Size of lots vary with a selection of 50' and 60' wide home options

### Community Dues/Fees:

Monthly HOA Fee of \$375 - including lawn care, internet via Hotwire fiber 300/300 service and plus basic tv with 2 set top boxes. \$1,500 Developer Fee, \$1,400 Capital Contribution Fee.

### Community Services:

Community lighting, High Speed Internet, Community Lakes, Community Street Lighting, Common Area Maintenance, Community Gate, and Individual Lawn Maintenance.

### Amenities:

Gated Entry, Clubhouse with community pool, fitness center and gathering room

### Entry Roads:

Gated Entry from 65th Avenue.

### Pet Policy:

Household Pets are welcome. Please review the Pets Section of the Covenants - Section 11, for more information.

### Elementary School:

For questions about additional school options, please contact the IRC School Board about their Parent's Choice program 772.564.3000. These are the closest schools to the community: North County Elementary School 6640 Old Dixie Hwy, Vero Beach, FL 32967 (772) 794-1941 Dodgertown Elementary School 4350 43rd Ave, Vero Beach, FL 32967 (772) 564-4100

### Middle School:

Storm Grove Middle School 6400 57th St, Vero Beach, FL 32967 (772) 564-6400 Gifford Middle School 4530 28th Ct, Vero Beach, FL 32967 (772) 564-3550

### High School:

Vero Beach High School 1707 16th St, Vero Beach, FL 32960 (772) 564-5600





# HIGH POINTE

## COMMUNITY FEATURES LIST

### Community Specific Specifications

- Natural Gas Community - See Sales Associate for Details
- Virtually Manned Community Guard Gate
- 300/300 Fiber Internet to Each Residence
- The Pointe - Community Clubhouse - Fitness Center, Pickle Ball, Pool and More

### "GHO Connectivity" Technology/Convenience Features

- GHO Smart Panel with CAT6 drops per plan, prewired for HotWire
- Wifi Enabled Automatic Garage Door Opener
- NEST Next Generation Learning Thermostat Or Equivalent
- Nest Hello Video Door Bell - Wifi Ready - Or Equivalent
- Schlage Smart Deadbolt - Entry Door

### Construction Features

- Double Row Steel & Concrete Bond Beam
- Plywood 5/8" (19/32) Roof Sheathing (no particle board)
- Professionally Engineered Roof Trusses with Hurricane Straps
- Concrete Slab on Grade with Steel Reinforcement and Fibermesh Concrete
- Concrete Block Construction with Concrete and Steel Reinforcement
- Concrete Based Textured Exterior Wall Finish
- Underground County/City Electrical, Water and Sewer Connections
- Sentricon Termite Treatment
- Underground Connection to FPL Supplied Electrical Power

### Exterior Features

- White Aluminum Frame Dual Pane Insulated Low-E Glass Windows and Sliding Glass Doors - per plan
- Impact Glass - All Windows, Sliders and Glass Doors - all openings
- Dimensional Roof Shingles with Limited Lifetime Warranty
- Paver Driveway, Front Walks and Rear Covered Patio Floor
- Fiberglass Raised-Panel 8' Front Doors with Clear Impact Glass Single Lite Sidelites - per plan
- Professionally Designed Landscaped Package and Floratam Sod
- Automatic Underground Irrigation System, Irrigation Water supplied by Community Master Pump
- Exterior Garden Hose Connections (2)
- Exterior GFI Electric Outlets (2)
- Sherwin Williams Exterior Doors and Garage Door Paint Exterior Acrylic Latex
- Sherwin Williams Exterior Paint - Acrylic Primer and Top Coat

### Utility Room and Garage

- Drop Down Stairs to Attic
- LED Lighting Provided for Garage and Utility Room

### Luxury Bathrooms

- Granite or Quartz Bath Vanity Top (GHO Level 1 Selections) with Rectangular White Under-Mount Sink - all baths
- Oversized Walk-In Showers - per plan
- Built in Shower Seat in Master Shower, Ceramic Tile Finish - per plan
- Built in Shower Soap Niche in all Showers, per plan
- Clear Glass Shower Enclosures- per plan
- Vanity Doors, Raised Height Vanities (GHO Level 1)
- His and Her Separate Vanities and Sinks - per plan
- Ceramic Tile Bathroom Floors with Walls and Shower Floors - Choice of Deco Wall Tile Packages with Listello Features all Baths (GHO Level 1 Selections)
- Bathroom Faucets and Fixtures (Brushed Finish)
- Raised, Comfort Height White Toilets - all Bathrooms
- Full Width Oversized Height Vanity Mirrors
- Clear Glass Windows in all Baths with Frosted Windows Option- per plan
- Square Shower Drains in all Bathrooms

### Interior Appointments

- 8 Ft Interior Doors with 2 Panel Square or Arch Top
- Solid Surface White Window Sills Throughout Living Area
- Ceramic Tile Flooring in Foyer, Kitchen, Halls, Great Room or Family Room & Living Room, Dining Room and Utility Room - layouts per plan (GHO Level 1 Selections)
- Designer Flooring Collection - Choice of Select Oversized Ceramic Floor Tile
- Wall-to-Wall Carpet in Choice of Designer Colors in all Bedrooms and Den (GHO Level 1 Selections)

### Interior Design Features

- Square Interior Wall Corners Throughout
- Flat Volume Ceilings - Minimum over 9feet High (per plan)
- Designer Knockdown Texture on Ceilings
- Vinyl Clad Shelving in all Closets - per plan
- Two Tone interior paint scheme (white trim, ceilings and doors choice of single wall color)
- Sherwin Williams Interior Paint - Flat Latex Walls and Ceiling
- Sherwin Williams Interior Trim Paint - Semi-Gloss Latex

### Electrical Specifications

- Recessed LED HiHat Lighting in Kitchen, Halls, Covered Entry and Patio - Per Plan
- Ceiling Fan Pre-Wire in all Bedrooms, Den, Great Rooms and Patio
- Walk-in Closet LED Lighting - per plan
- Decorative Rocker Type Switches
- Front Exterior Coach Lights, per plan



**GHO HOMES****HIGH POINTE  
COMMUNITY FEATURES LIST**

A GREEN BRICK PARTNER

**Gourmet Kitchens**

- Raised Panel Cabinet Doors 42" Uppers (Phase 1 - Level 1)
- Raised Panel Cabinet Doors 42" Uppers (Phase 2 - Level 2)
- Granite or Quartz Kitchen Counter Top, with 4 inch back splash, layout per plan (GHO Level 1 Selections)
- Kitchen Faucet: Pull Out Spray - Stainless Steel Finish
- Food Waste Garbage Disposal with Air Switch
- Stainless Steel Undermount Kitchen Sink 70/30 Split
- Stainless Steel Finish Appliance Package
- GE Side by Side 25.3cf Refrigerator
- 36" 350 CFM Stainless Steel Range Hood (Phase 2)
- GE Over The Range Microwave (Phase 1)
- GE 36" Gas 5 Burner Cooktop (Phase 2)
- GE Single Wall Oven/Microwave Combo (Phase 2)
- GE Gas Freestanding Range (Phase 1)
- GE Dishwasher
- Flooring: Ceramic Tile in Kitchen and Breakfast Rooms per plan
- Walk-in Pantry with Vinyl Clad Ventilated Shelving - per plan

**Energy Efficient & Safety Features**

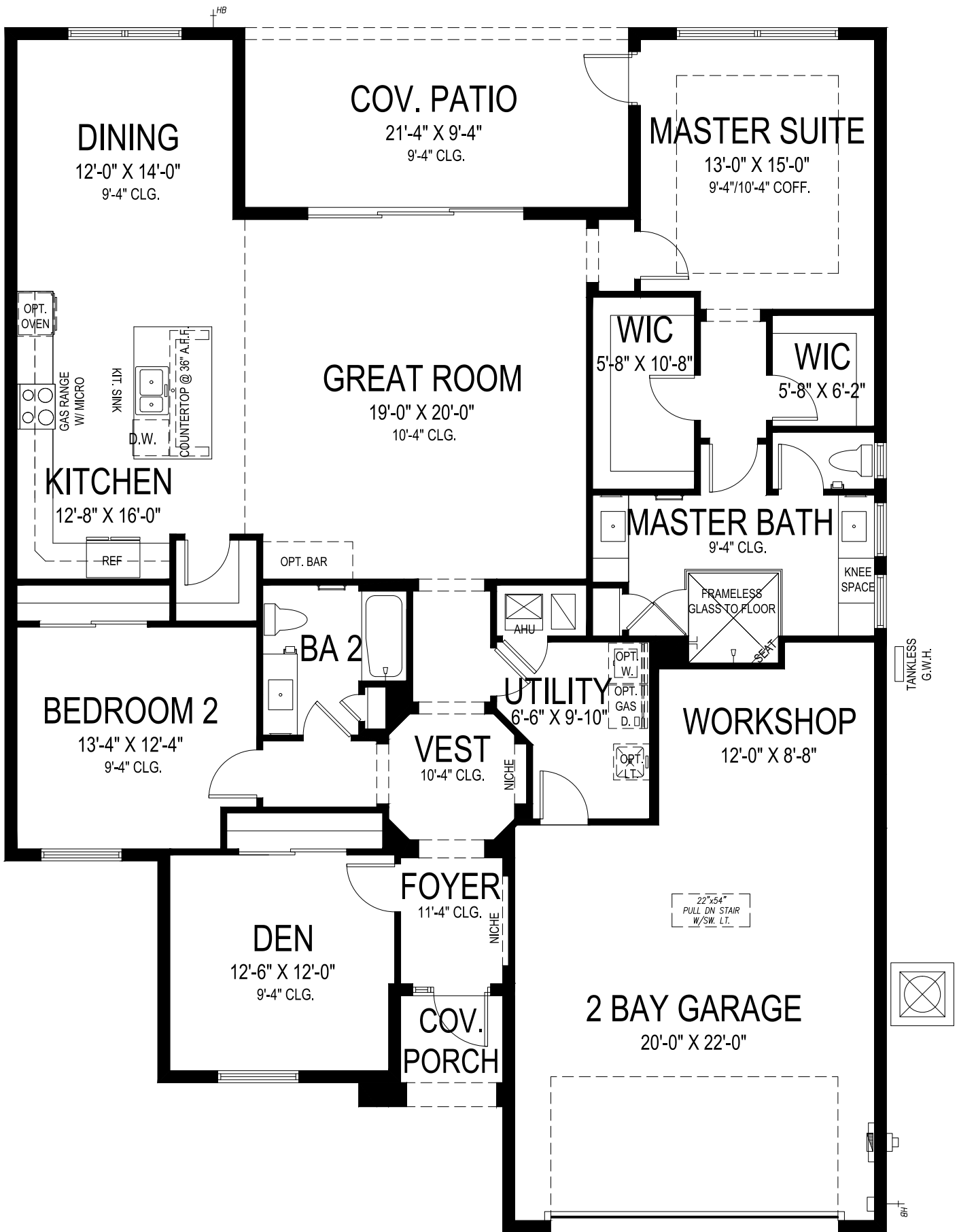
- High Efficiency Air Conditioning System Including Multi Speed Air Handler - Target 16 SEER Efficiency\*/ Straight Cool / Sized Per Home
- HVAC AC Filter Access Located at AC Unit or in Adjacent Side-Wall for Easy Access - per plan
- Attic Spray Foam Insulation
- Energy Efficient R4.1 Concrete Block Wall Insulation
- Energy Efficient R11 Garage to House Wall Insulation
- Dual Pane Low E Coated Impact Glass on Windows / Sliding Glass Doors
- Rinnai Gas Tankless Water Heater, Exterior Mount with Hot Water Recirculating System
- ARC Fault Electrical Outlets Per Code
- Smoke and Carbon Monoxide Detectors per code



To learn more about these homes, please contact  
Nicole Morris at 772.257.1100 or e-mail [nicolem@ghohomes.com](mailto:nicolem@ghohomes.com)



Seller reserves the right to make changes or modifications to plans, maps, plan specifications, materials, Features, and colors without notice. Prices are subject to change without notice. Maps, plans, landscaping and elevation renderings are artist's conceptions, not to scale, and may not accurately depict the homes or lots as they are built. This brochure is for illustrative purposes only and not a part of a legal contract. Lic. #CBC051145



**GHO HOMES**

A GREEN BRICK PARTNER

**ALLURA**

2 BEDS • DEN • 2 BATHS • 2 BAY GARAGE • 49' x 67' • 2,958 SF  
A/C: 2,114 sf • covered entry: 35 sf • covered patio: 213 sf • garage: 596 sf

All dimensions, features, specifications and square footages are approximate and subject to change without notice. Maps, plans, landscaping and elevation renderings are artist's conceptions, are not to scale, and may not accurately depict the homes or lots as they are built. © GHO Homes 2018. Revised August 1, 2022.



772.257.1100 • GHOHOMES.COM



# GHO HOMES

A GREEN BRICK PARTNER

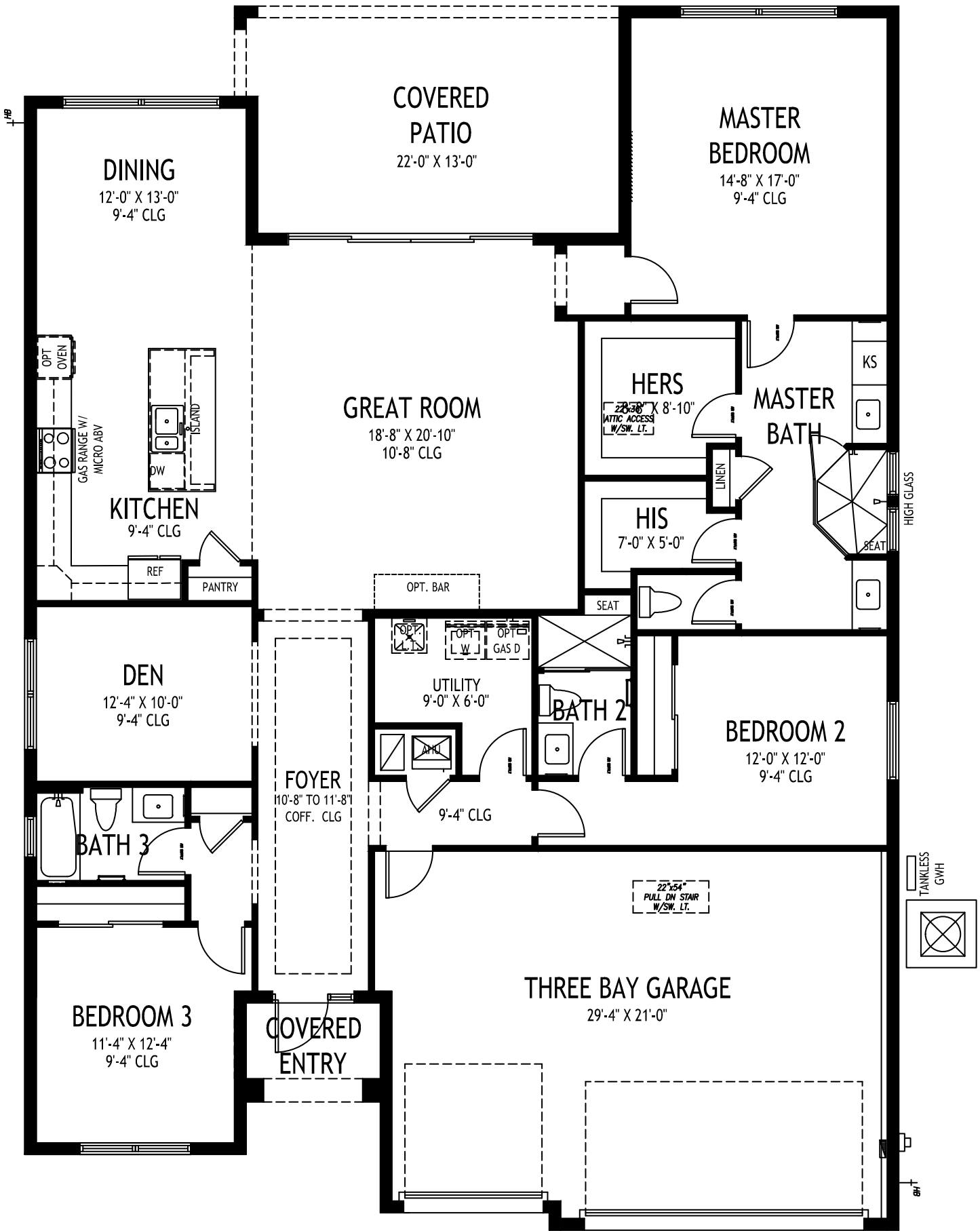
## AURORA 25

3 BEDS • DEN • 3 BATHS • 2 BAY GARAGE • 50' x 73' • 3,300 SF  
A/C: 2,515 sf • covered entry: 38 sf • covered patio: 180 sf • garage: 567 sf

All dimensions, features, specifications and square footages are approximate and subject to change without notice. Maps, plans, landscaping and elevation renderings are artist's conceptions, are not to scale, and may not accurately depict the homes or lots as they are built. © GHO Homes 2024. Revised December 18, 2024.



772.257.1100 • GHOHOMES.COM



# GHO HOMES

A GREEN BRICK PARTNER

## CAPISTRANO GRANDE

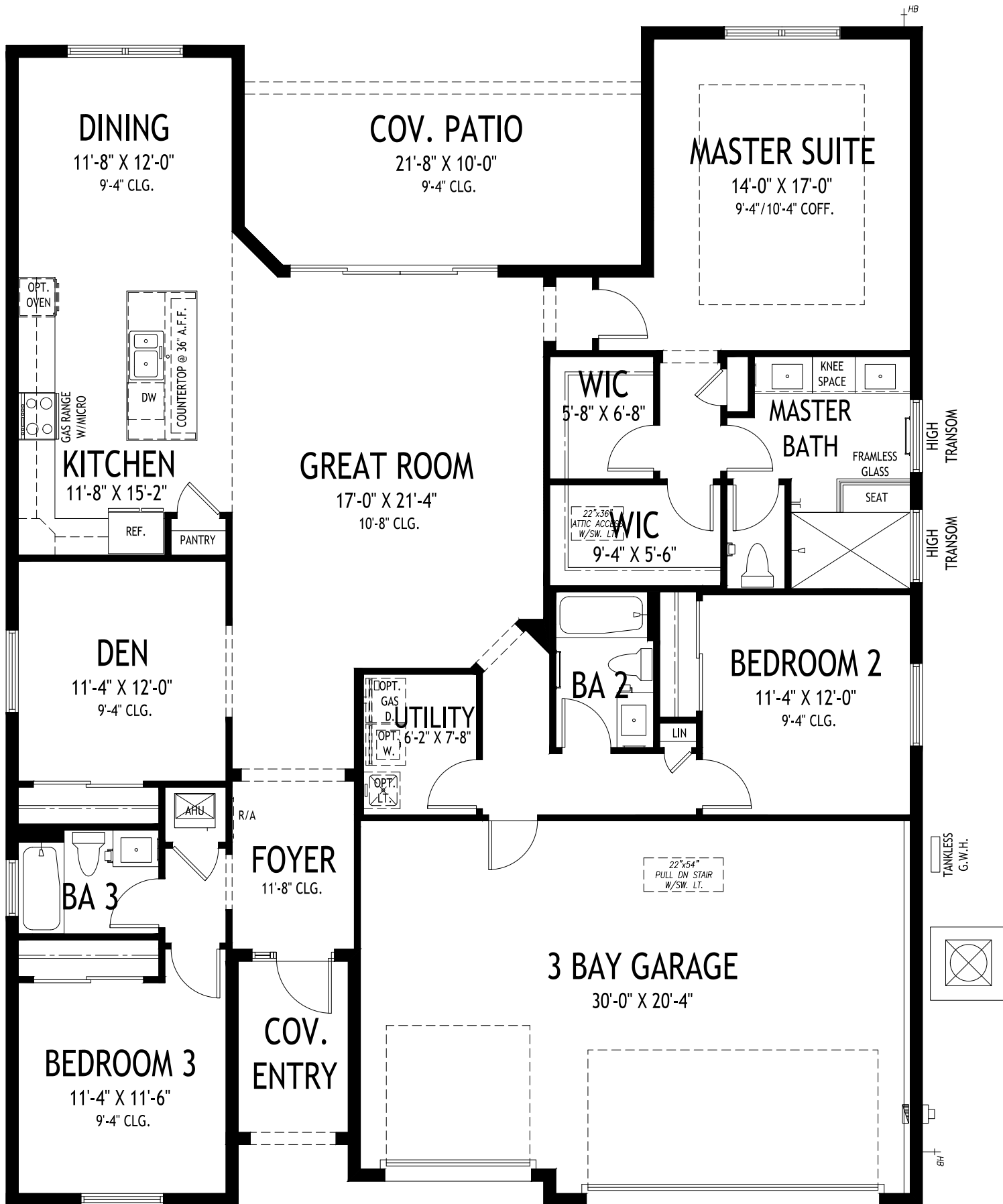
3 BEDS • DEN • 3 BATHS • 3 BAY GARAGE • 50' x 70' • 3,316 SF.  
A/C: 2,361 sf. • covered entry: 43 sf. • covered patio: 276 sf. • garage: 636 sf.

All dimensions, features, specifications and square footages are approximate and subject to change without notice. Maps, plans, landscaping and elevation renderings are artist's conceptions, are not to scale, and may not accurately depict the homes or lots as they are built. © GHO Homes 2018. Revised December 13, 2023.



772.257.1100 • GHOHOMES.COM





# GHO HOMES

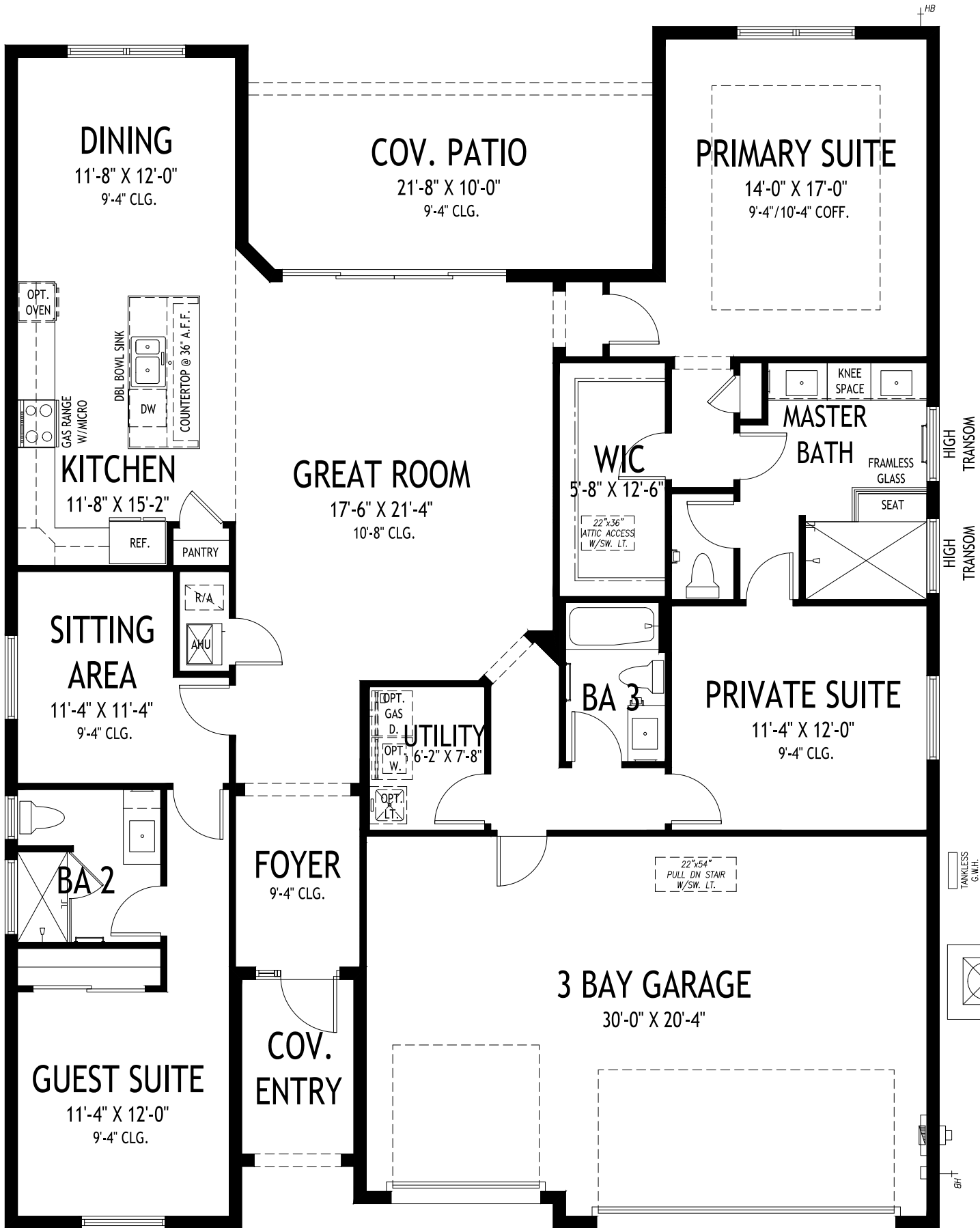
A GREEN BRICK PARTNER

## CORDELLA GRANDE

3 BEDS • DEN • 3 BATHS • 3 BAY GARAGE • 50' x 64'-4" • 3,104 SF  
A/C: 2,190 sf • covered entry: 60 sf • covered patio: 215 sf • garage: 639 sf

All dimensions, features, specifications and square footages are approximate and subject to change without notice. Maps, plans, landscaping and elevation renderings are artist's conceptions, are not to scale, and may not accurately depict the homes or lots as they are built. © GHO Homes 2019. Revised March 21, 2024.





**GHO HOMES**

A GREEN BRICK PARTNER

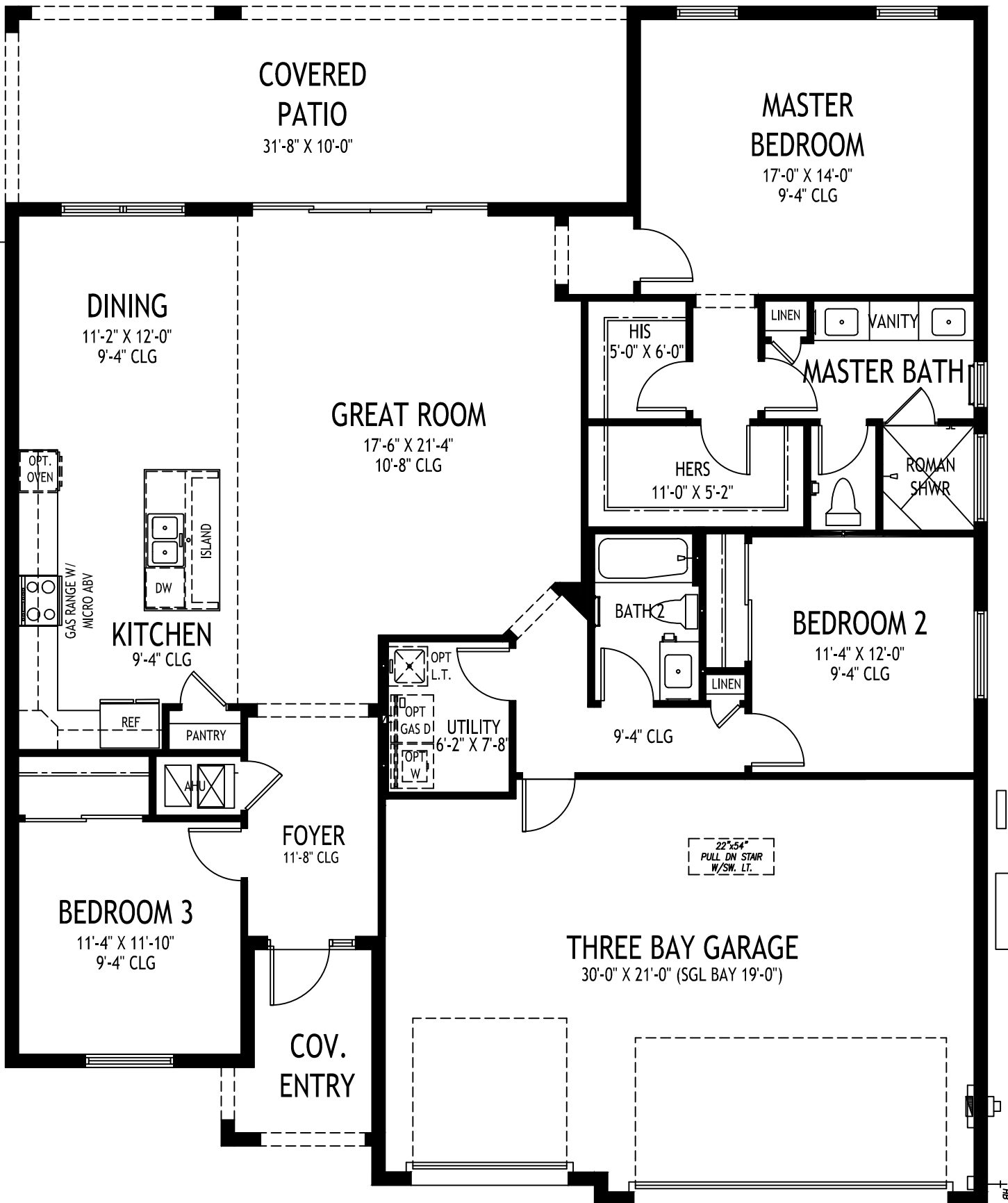
**CORDELLA GRANDE DUET**

3 BEDS • DEN • 3 BATHS • 3 BAY GARAGE • 50' x 64'-4" • 3,104 SF  
A/C: 2,190 sf • covered entry: 60 sf • covered patio: 215 sf • garage: 639 sf

All dimensions, features, specifications and square footages are approximate and subject to change without notice. Maps, plans, landscaping and elevation renderings are artist's conceptions, are not to scale, and may not accurately depict the homes or lots as they are built. © GHO Homes 2023. Revised July 26, 2023.



772.257.1100 • GHOHOMES.COM



**GHO HOMES**

A GREEN BRICK PARTNER

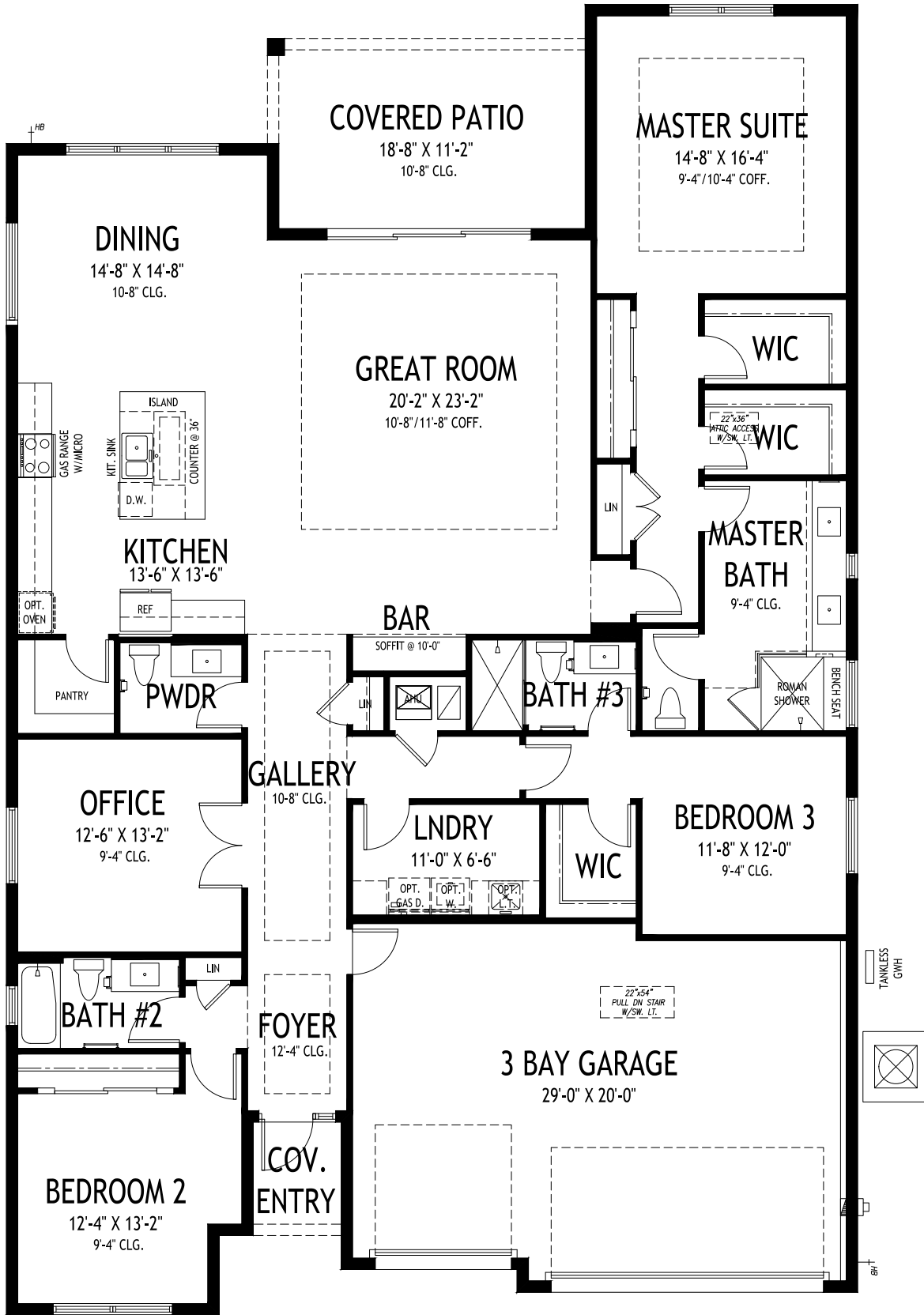
**CORDELLA JEM**

3 BEDS • 2 BATHS • 3 BAY GARAGE • 50' x 61' • 2,939 SF  
A/C: 1,899 sf • covered entry: 67 sf • covered patio: 317 sf • garage: 656 sf

All dimensions, features, specifications and square footages are approximate and subject to change without notice. Maps, plans, landscaping and elevation renderings are artist's conceptions, are not to scale, and may not accurately depict the homes or lots as they are built. © GHO Homes 2020. Revised October 19, 2022.



772.257.1100 • GHOHOMES.COM



**GHO HOMES**

A GREEN BRICK PARTNER

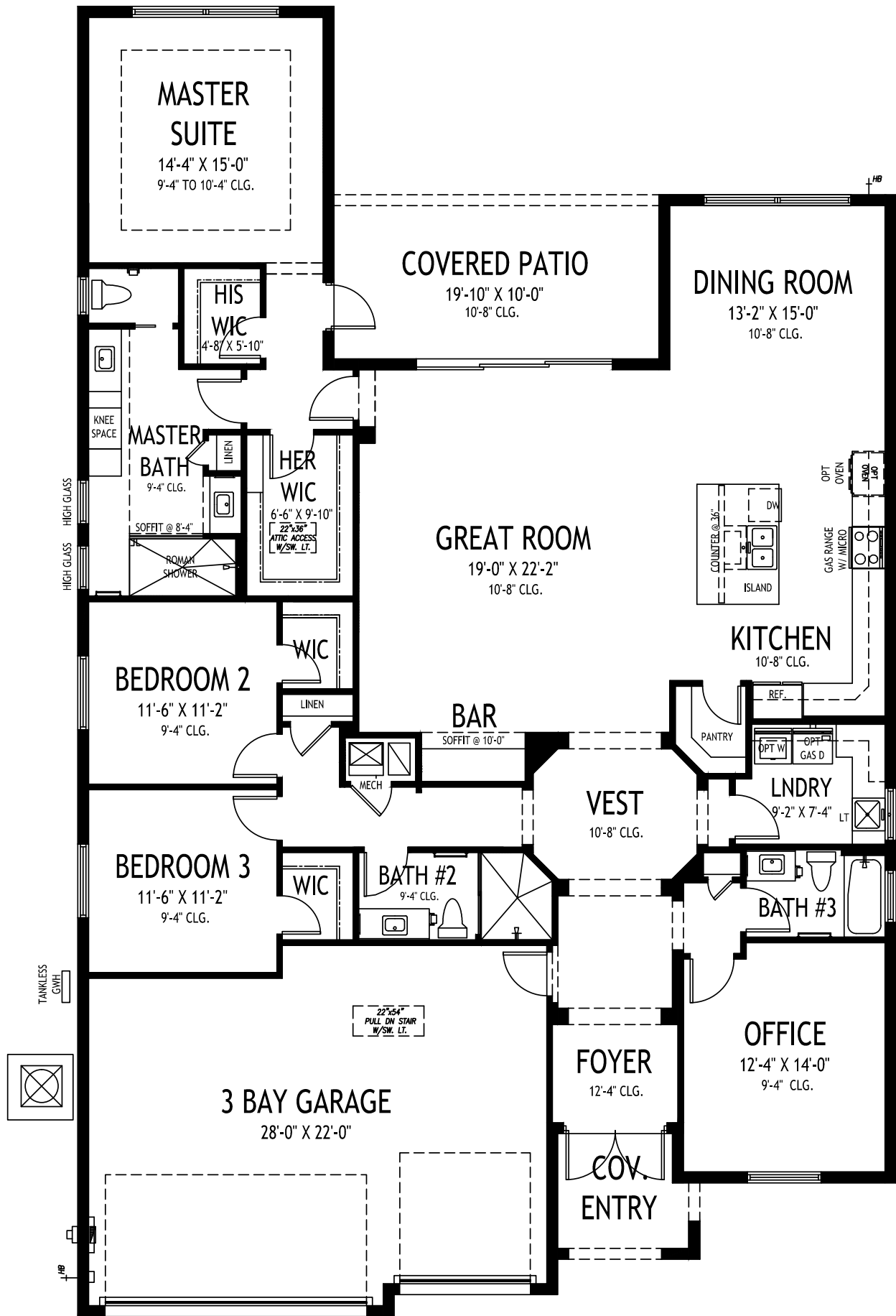
**SERAPHINA 23**

3 BEDS • DEN • 3.5 BATHS • 3 BAY GARAGE • 50' x 77' • 3,599 SF  
A/C: 2,737 sf • covered entry: 34 sf • covered patio: 205 sf • garage: 623 sf

All dimensions, features, specifications and square footages are approximate and subject to change without notice. Maps, plans, landscaping and elevation renderings are artist's conceptions, are not to scale, and may not accurately depict the homes or lots as they are built. © GHO Homes 2023. Revised August 28, 2024.



772.257.1100 • GHOHOMES.COM



# GHO HOMES

A GREEN BRICK PARTNER

## VENETIAN

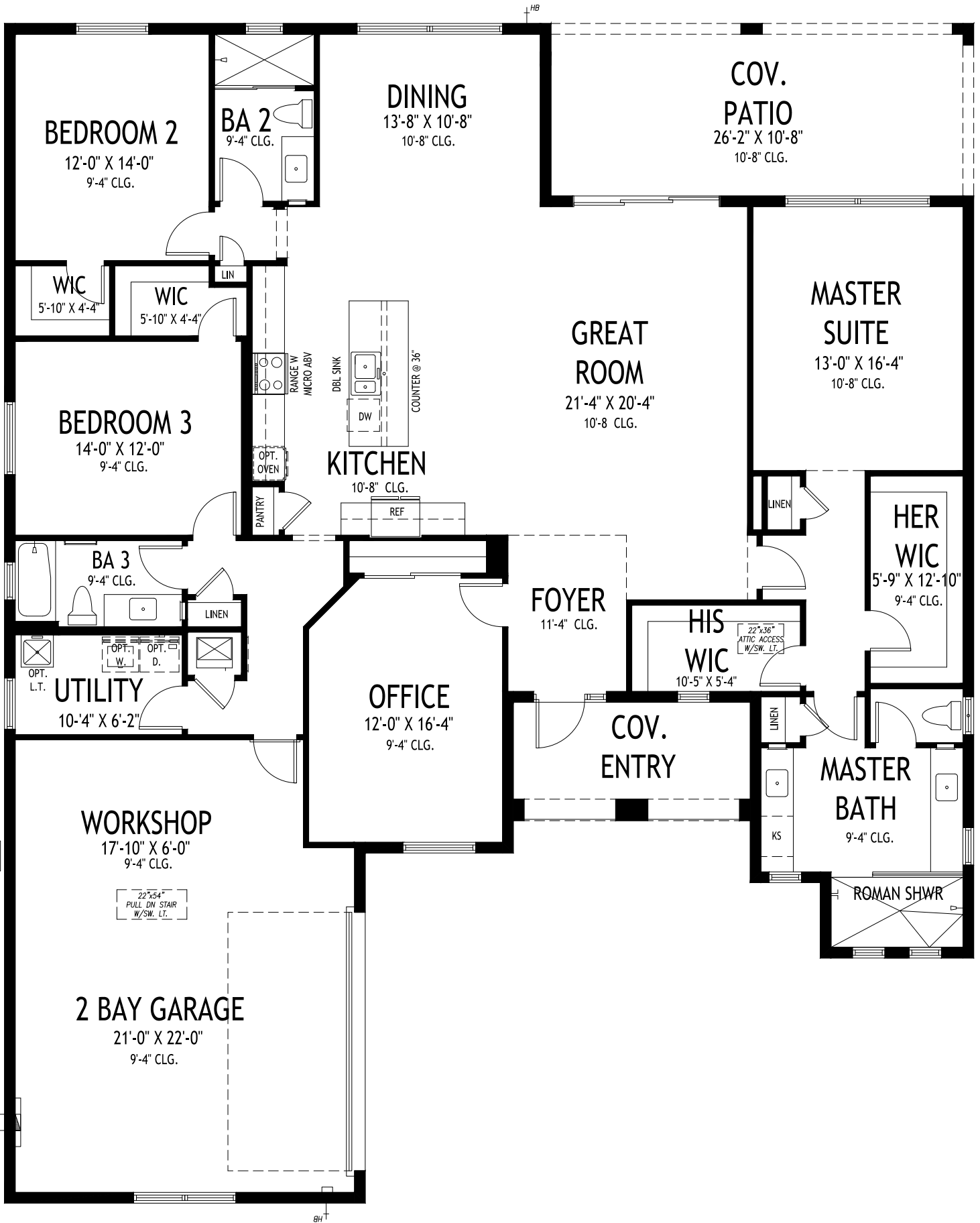
3 BEDS • DEN • 3 BATHS • 3 BAY GARAGE • 50' x 80' • 3,462 SF  
 A/C: 2,584 sf • covered entry: 61 sf • covered patio: 198 sf • garage: 619 sf

All dimensions, features, specifications and square footages are approximate and subject to change without notice. Maps, plans, landscaping and elevation renderings are artist's conceptions, are not to scale, and may not accurately depict the homes or lots as they are built. © GHO Homes 2018. Revised August 1, 2022.



772.257.1100 • GHOHOMES.COM





**GHO HOMES**

A GREEN BRICK PARTNER

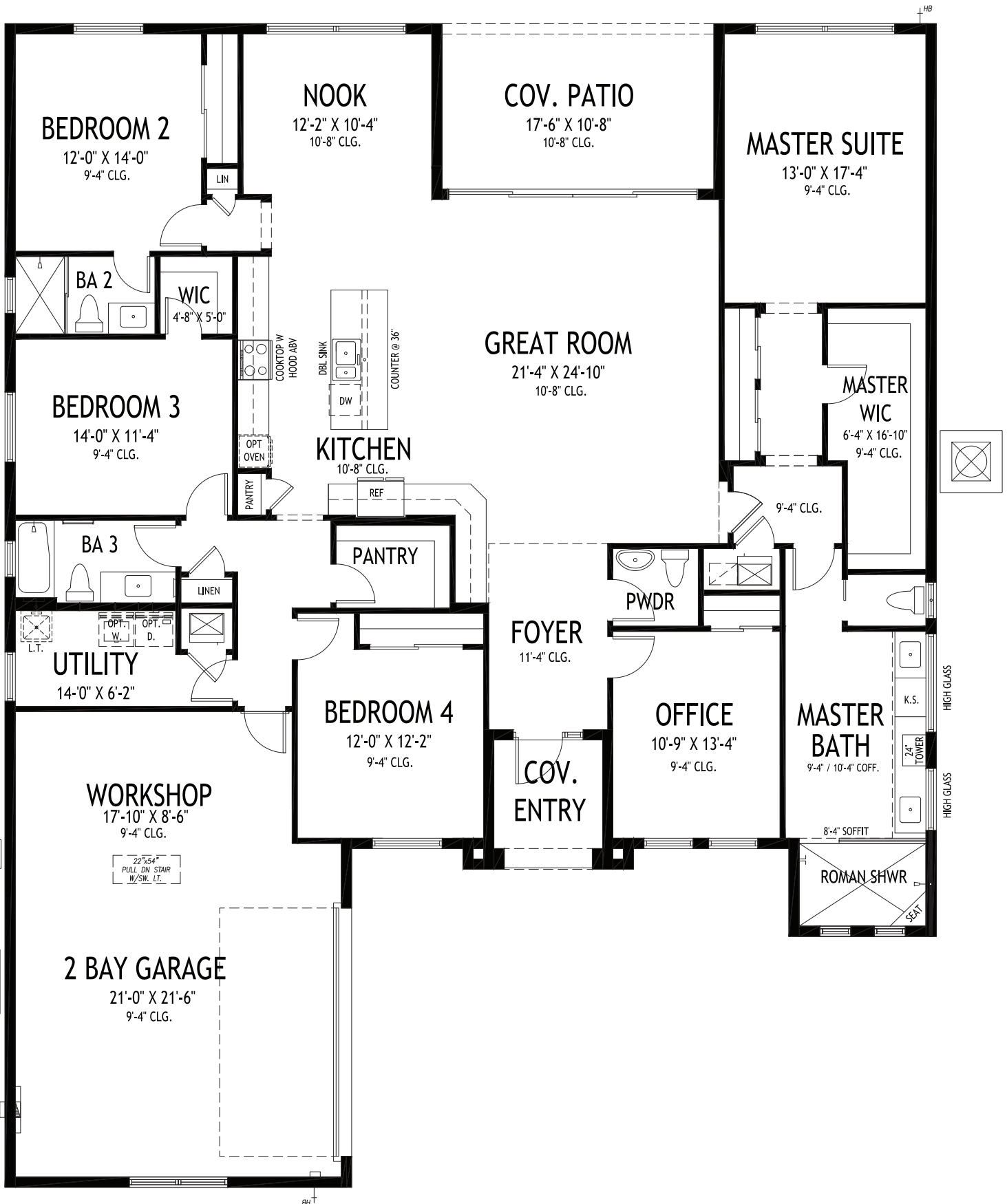
**WESTON**

3 BEDS • DEN • 3 BATHS • 2+ BAY GARAGE • 60' x 73' • 3,605 SF  
A/C: 2,603 sf • covered entry: 108 sf • covered patio: 279 sf • garage: 615 sf

All dimensions, features, specifications and square footages are approximate and subject to change without notice. Maps, plans, landscaping and elevation renderings are artist's conceptions, are not to scale, and may not accurately depict the homes or lots as they are built. © GHO Homes 2022. Revised February 9, 2023.



772.257.1100 • GHOHOMES.COM



## WESTON SIGNATURE

4 BEDS • DEN • 3.5 BATHS • 2+ BAY GARAGE • 60' x 75' • 3,747 SF  
 A/C: 2,844 sf • covered entry: 64 sf • covered patio: 187 sf • garage: 652 sf

# GHO HOMES

A GREEN BRICK PARTNER

All dimensions, features, specifications and square footages are approximate and subject to change without notice. Maps, plans, landscaping and elevation renderings are artist's conceptions, are not to scale, and may not accurately depict the homes or lots as they are built. © GHO Homes 2022. Revised November 7, 2022.



CR020148

772.257.1100 • GHOHOMES.COM





- HIGH POINTE WEST  
(SOLD OUT)
- PHASE ONE
- PHASE TWO



# H I G H A P O I N T E



Maps, plans, landscaping and elevation renderings are artist's conceptions, are not to scale, and may not accurately depict the homes or lots as they are built.

**GHO HOMES**  
A GREEN BRICK PARTNER