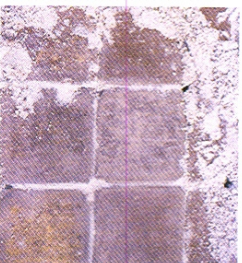


Maintenance



Sealing, color and wear

Pavers get their color by adding pigment to the production mix. Colors are very stable, showing little change over time. However, as the surface wears from traffic or weather, there may be a gradual change in color. It is not necessary to seal a paver surface. In many cases, you may want to retain the plain look of the unsealed color. Sealing your pavers, however, prevents added dirt from foot and vehicle traffic, ensures easier surface cleaning, extends their initial appearance and enhances their color. It may also make the pavers natural color somewhat darker. Consult your installer, or call PaverSystems™ to find out what's right for your home.



Joint sand

Sand-filled joints may accumulate dirt with time and traffic. However, some installations may lose joint sand due to wind and runoff. In that case, simply replenish the joints with new dry sand. If the problem recurs, you may want to seal the paver surface or use a joint sand stabilizer.



Efflorescence

Efflorescence is a white residue caused by lime released from within the paver. It does not damage the paver and generally wears away over time. If you'd like, efflorescence can be removed with cleaners made especially for pavers. Sealing the paver surface may also help.



Removing oil stains

Concrete pavers are not damaged by oil leaking from a car; however, the stains can be difficult to remove. Treat them as soon as possible by wiping the excess oil from the surface and washing them with detergent and hot water. You may need to do this several times for particularly stubborn stains. If the stains appear permanent, it may be easier to simply replace the entire paver. Concrete pavers are made to be removed easily in just such a case.



Controlling pests and weeds

A common concern of those interested in pavers as opposed to concrete is the emergence of ants and weeds between paving stones. Sealing your pavers or using a joint sand stabilizer is the easiest solution. The use of such herbicides and pesticides as Roundup® and Ampro® is also effective and will not stain or harm your pavers.