

**GHO HOMES****9404 SW PINNACLE PLACE NORTH**  
PORT ST LUCIE, FL 34987

A GREEN BRICK PARTNER

**BELTERRA | LAUREL**

Bed: 3 • Bath: 2.5 • Living SF: 2,241 • Total SF: 3,219

Move-in date: Fall 2025

**\$770,447****CONTACT****Jennifer Smith**

P: 561.329.8863

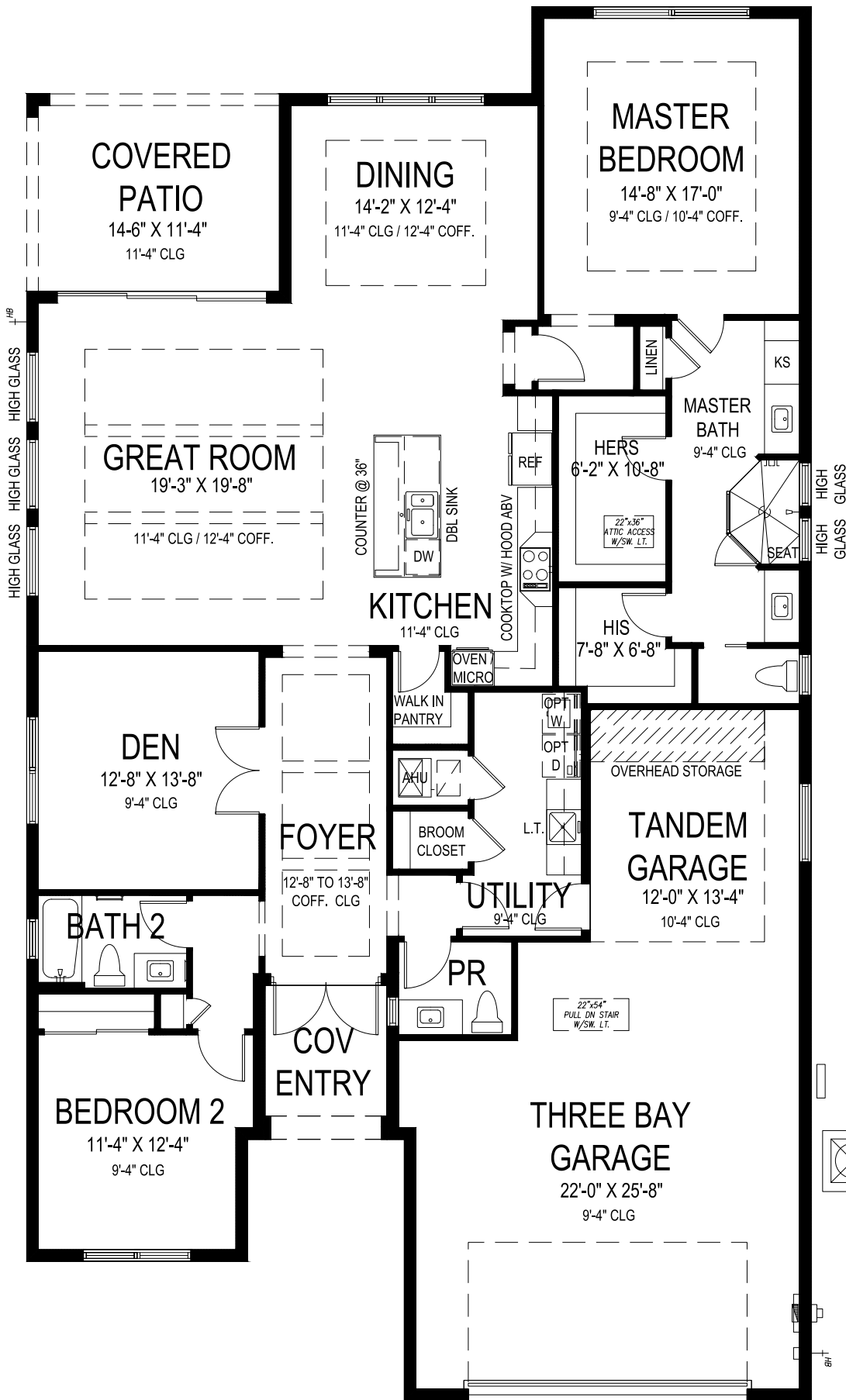
C: 561.329.8863

JenniferS@ghohomes.com

Luxury Large Lake Front 3 bedroom home! Enlarged Pool with 3 Deck Jets, 16 ft bench, with Extended Deck and Screen Enclosure with Panoramic Screen! BELTERRA is the newest luxury boutique-community to emerge inside of the highly sought after Tradition. All ages, single family and gated. BELTERRA has resort lifestyle amenities including a clubhouse with tennis, pickleball and basketball courts, wine lockers, a billiards and card room, resort-style swimming pool and a state-of-the-art fitness center.

**DS** GHO HOMES  
DESIGN STUDIO772.257.1100 | **GHOHOMES.COM****TAILOR MADE**  
— GHO —

Seller reserves the right to make changes or modifications to plans, maps, plan specifications, materials, Features, and colors without notice. Prices are subject to change without notice. Maps, plans, landscaping and elevation renderings are artist's conceptions, not to scale, and may not accurately depict the homes or lots as they are built. This brochure is for illustrative purposes only and not a part of a legal contract. Lic. #CBC051145



## LAUREL

2 BEDS • DEN • 2.5 BATHS • 3 BAY GARAGE • 45' x 80' • 3,219 SF  
A/C: 2,241 sf • covered entry: 61 sf • covered patio: 164 sf • garage: 753 sf

# GHO HOMES

A GREEN BRICK PARTNER

772.257.1100 • GHOHOMES.COM

All dimensions, features, specifications and square footages are approximate and subject to change without notice. Maps, plans, landscaping and elevation renderings are artist's conceptions, are not to scale, and may not accurately depict the homes or lots as they are built. © GHO Homes 2021. Revised July 7, 2021.

