



9332 SW PINNACLE PLACE
PORT ST LUCIE, FL 34987



BELTERRA | IRIS GRANDE

Bed: 3 • Bath: 3 • Living SF: 2,361 • Total SF: 3,316

Move-in date: Fall 2025

\$851,591

CONTACT

Jennifer Smith

P: 561.329.8863

C: 561.329.8863

JenniferS@ghohomes.com

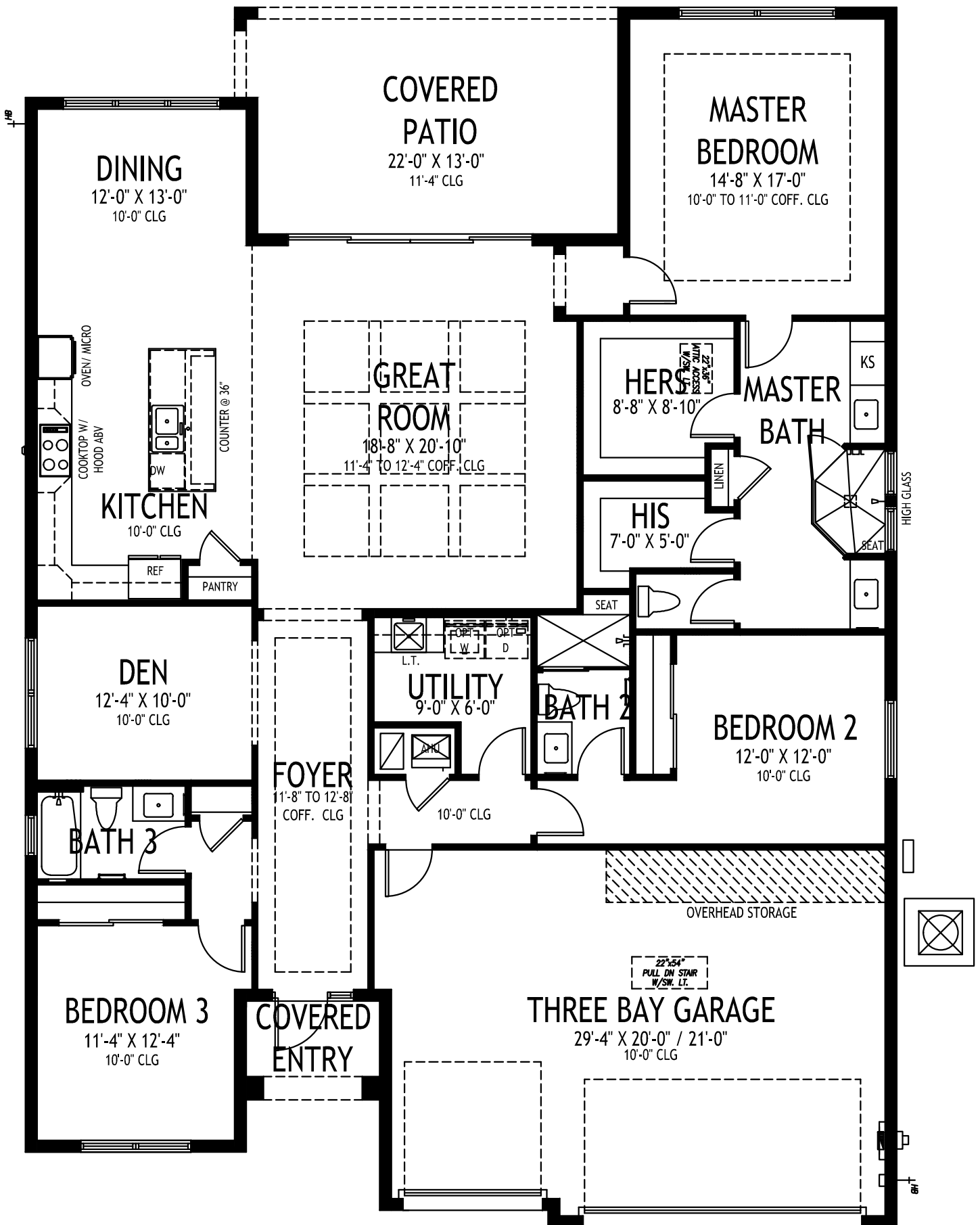
Luxury Large Lake Front 3 bedroom home! Enlarged Pool with 2 arch descents, Sunshelf with 2 bubblers, with Extended Deck and Screen Enclosure with Panoramic Screen! BELTERRA is the newest luxury boutique-community to emerge inside of the highly sought after Tradition. All ages, single family and gated. BELTERRA has resort lifestyle amenities including a clubhouse with tennis, pickleball and basketball courts, wine lockers, a billiards and card room, resort-style swimming pool and a state-of- the-art fitness center.33



772.257.1100 | GHOHOMES.COM



Seller reserves the right to make changes or modifications to plans, maps, plan specifications, materials, Features, and colors without notice. Prices are subject to change without notice. Maps, plans, landscaping and elevation renderings are artist's conceptions, not to scale, and may not accurately depict the homes or lots as they are built. This brochure is for illustrative purposes only and not a part of a legal contract. Lic. #CBC051145



GHO HOMES

A GREEN BRICK PARTNER

IRIS GRANDE

3 BEDS • DEN • 3 BATHS • 3 BAY GARAGE • 50' x 70' • 3,316 SF
A/C: 2,361 sf • covered entry: 43 sf • covered patio: 276 sf • garage: 636 sf

All dimensions, features, specifications and square footages are approximate and subject to change without notice. Maps, plans, landscaping and elevation renderings are artist's conceptions, are not to scale, and may not accurately depict the homes or lots as they are built. © GHO Homes 2021. Revised November 1, 2022.



772.257.1100 • GHOHOMES.COM