

GHO HOMES

9308 SW PINNACLE PLACE PORT ST LUCIE, FL 34987 | LOT 25

A GREEN BRICK PARTNER



BELTERRA | MARIPOSA

Bed: 4 • Bath: 3 • Living SF: 2,636 • Total SF: 3,509

Move-in date: May 2025

\$894,557

CONTACT

Jennifer Smith

P: 561.329.8863

C: 561.329.8863

JenniferS@ghohomes.com

Enjoy your PERSONAL SWIMMING POOL AND SCREEN ENCLOSURE! (salt water chlorination) Included with your home... a 50-amp circuit in garage for future electric car charging station, garage floor finished with epoxy and color flake, 36" gourmet natural gas cooktop and hood vent, quartz countertops in kitchen and bathrooms, crown molding in the main living areas, dining room, den and master bedroom, Energy Star natural gas tankless water heater, impact glass on all doors, windows and sliders, 10 ft sliding glass doors in great room, natural wood shelving in pantry and in all closets and much more!



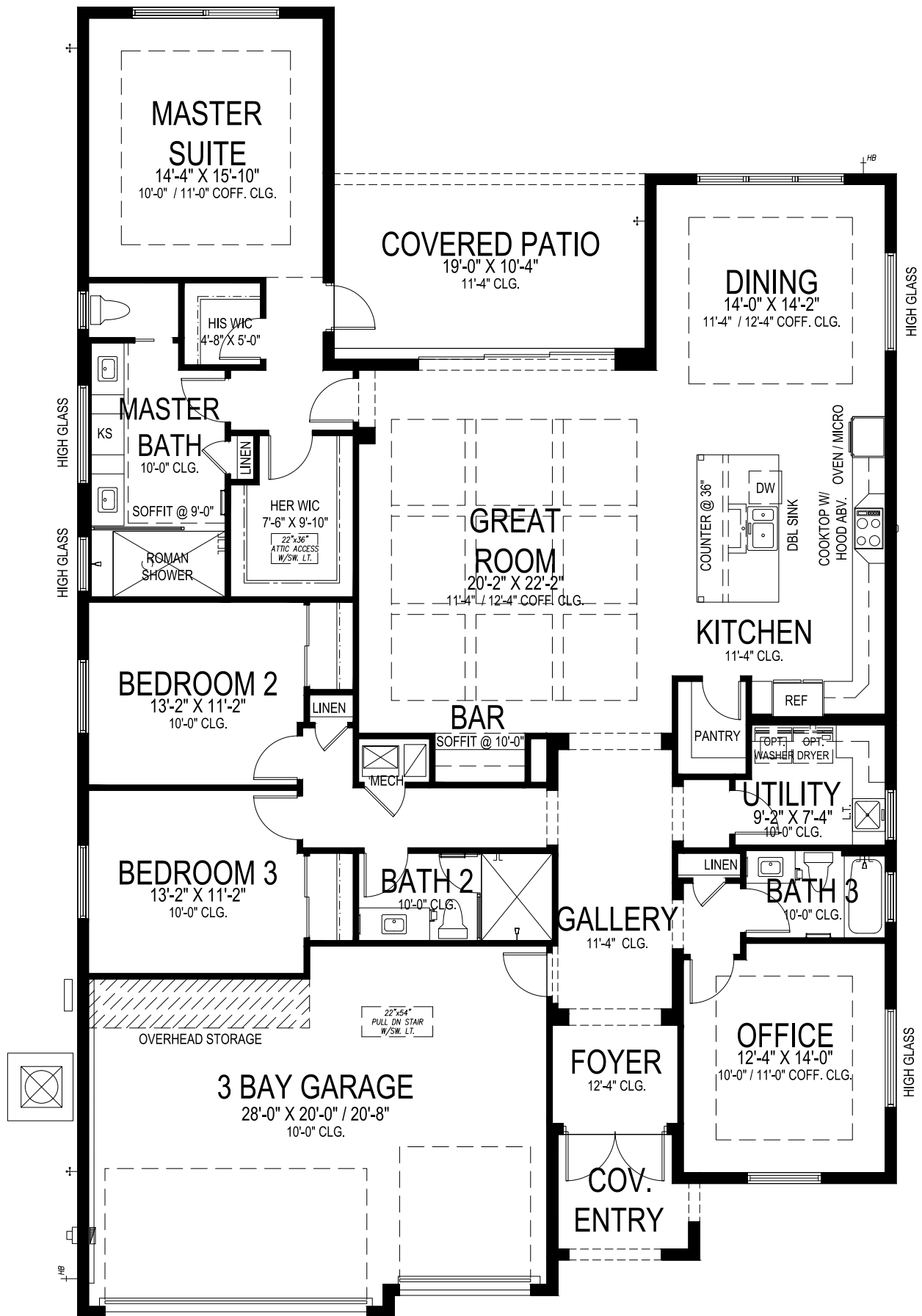
DS GHO HOMES
DESIGN STUDIO

772.257.1100 | GHOHOMES.COM

TAILOR MADE
GHO



Seller reserves the right to make changes or modifications to plans, maps, plan specifications, materials, Features, and colors without notice. Prices are subject to change without notice. Maps, plans, landscaping and elevation renderings are artist's conceptions, not to scale, and may not accurately depict the homes or lots as they are built. This brochure is for illustrative purposes only and not a part of a legal contract. Lic. #CBC051145



MARIPOSA

3 BEDS • DEN • 3 BATHS • 3 BAY GARAGE • 50' x 80' • 3,509 SF
A/C: 2,636 sf • covered entry: 61 sf • covered patio: 196 sf • garage: 616 sf

GHO HOMES

A GREEN BRICK PARTNER

772.257.1100 • GHOHOMES.COM

All dimensions, features, specifications and square footages are approximate and subject to change without notice. Maps, plans, landscaping and elevation renderings are artist's conceptions, are not to scale, and may not accurately depict the homes or lots as they are built. © GHO Homes 2021. Revised November 9, 2023.

