

GHO HOMES**9259 SW PINNACLE PLACE**

PORT ST LUCIE, FL 34987

A GREEN BRICK PARTNER

**BELTERRA | MONARCH GRANDE**

Bed: 3 • Bath: 2.5 • Living SF: 2,720 • Total SF: 3,755

Move-in date: Fall 2025

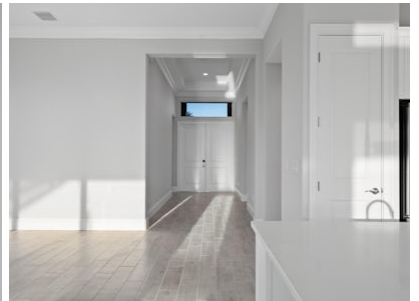
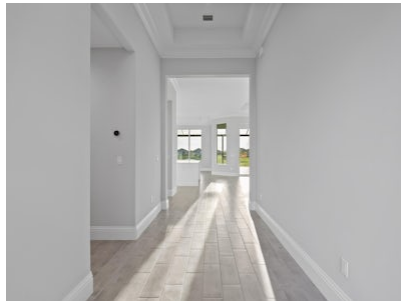
\$881,898**CONTACT****Jennifer Smith**

P: 561.329.8863

C: 561.329.8863

JenniferS@ghohomes.com

3 bay window upgrade! Luxury Large 3 bedroom home! Enlarged Pool with 3 Deck Jets, with Extended Deck and Screen Enclosure! BELTERRA is the newest luxury boutique-community to emerge inside of the highly sought after Tradition. All ages, single family and gated. BELTERRA has resort lifestyle amenities including a clubhouse with tennis, pickleball and basketball courts, wine lockers, a billiards and card room, resort-style swimming pool and a state-of-the-art fitness center.


DS **GHO HOMES**
 DESIGN STUDIO
772.257.1100 | GHOHOMES.COM
TAILOR MADE
 — GHO —


Seller reserves the right to make changes or modifications to plans, maps, plan specifications, materials, Features, and colors without notice. Prices are subject to change without notice. Maps, plans, landscaping and elevation renderings are artist's conceptions, not to scale, and may not accurately depict the homes or lots as they are built. This brochure is for illustrative purposes only and not a part of a legal contract. Lic. #CBC051145



GHO HOMES

A GREEN BRICK PARTNER

MONARCH GRANDE

3 BEDS • DEN • 2.5 BATHS • 3 BAY GARAGE • 60' x 67' • 3,697 SF
A/C: 2,661 sf • covered entry: 71 sf • covered patio: 216 sf • garage: 748 sf

All dimensions, features, specifications and square footages are approximate and subject to change without notice. Maps, plans, landscaping and elevation renderings are artist's conceptions, are not to scale, and may not accurately depict the homes or lots as they are built. © GHO Homes 2021. Revised July 7, 2021.



CR000148

772.257.1100 • GHOHOMES.COM