

**GHO HOMES****6370 SECLUSION TERRACE**

VERO BEACH, FL 32967

A GREEN BRICK PARTNER

**HIGH POINTE | CORDELLA GRANDE**

Bed: 3 • Bath: 3 • Living SF: 2,190 • Total SF: 3,104

Move-in date: February 2025

**\$618,753****CONTACT****Nicole Morris**

P: 772.257.1100

C: 772.882.8990

nicolem@ghohomes.com

Discover the epitome of luxurious coastal living with a Cordella Grande floor plan, currently under construction on a spacious waterfront lot in High Pointe. Boasting a comfortable 2190 sq. ft. of living space, this home offers 3 bedrooms, 3 baths, a den, and a spacious 3-car garage, providing ample room for relaxation and entertainment. The gourmet kitchen is a chef's delight, featuring a microwave/oven combo with stainless steel hood, upgraded white cabinets adorned with crown molding, beautiful upgraded quartz countertops, and a captivating backsplash. Upgraded cabinet doors with soft-close and dovetail finish add a touch of sophistication. Throughout the home, upgraded wood-look tile flooring creates an ambiance of elegance and durability. With all windows and sliding doors crafted from impact glass, safety and security are paramount. High Pointe, a natural gas community, promises a future clubhouse with amenities including a pool, fitness room, pickleball courts, putting green, and a g[...]



Seller reserves the right to make changes or modifications to plans, maps, plan specifications, materials, Features, and colors without notice. Prices are subject to change without notice. Maps, plans, landscaping and elevation renderings are artist's conceptions, not to scale, and may not accurately depict the homes or lots as they are built. This brochure is for illustrative purposes only and not a part of a legal contract. Lic. #CBC051145

**GHO HOMES**

A GREEN BRICK PARTNER

**6370 SECLUSION TERRACE**

VERO BEACH, FL 32967

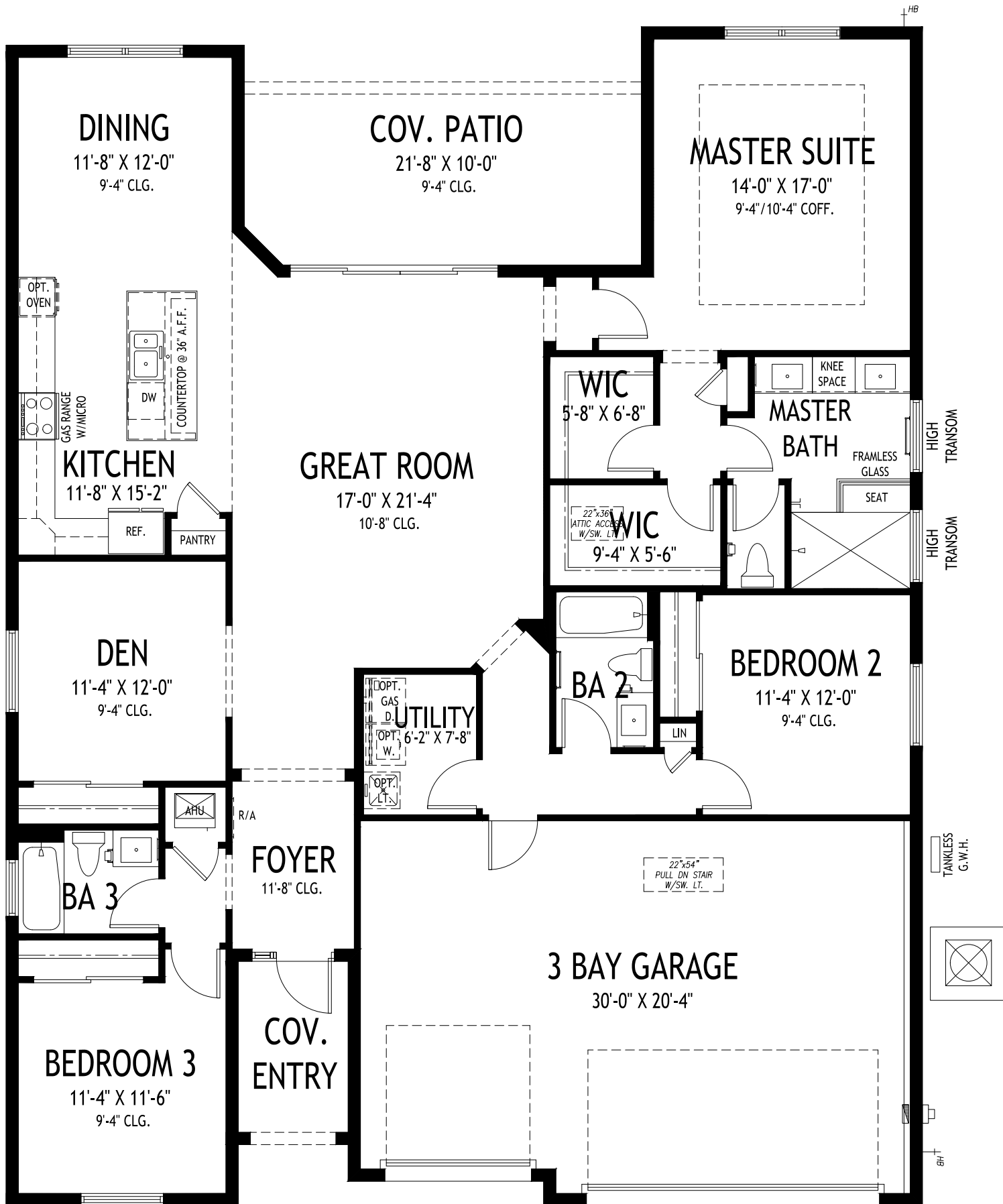
**DS** **GHO HOMES**  
DESIGN STUDIO

**772.257.1100 | GHOHOMES.COM**

**TAILOR MADE**  
GHO



Seller reserves the right to make changes or modifications to plans, maps, plan specifications, materials, Features, and colors without notice. Prices are subject to change without notice. Maps, plans, landscaping and elevation renderings are artist's conceptions, not to scale, and may not accurately depict the homes or lots as they are built. This brochure is for illustrative purposes only and not a part of a legal contract. Lic. #CBC051145



# GHO HOMES

A GREEN BRICK PARTNER

## CORDELLA GRANDE

3 BEDS • DEN • 3 BATHS • 3 BAY GARAGE • 50' x 64'-4" • 3,104 SF  
A/C: 2,190 sf • covered entry: 60 sf • covered patio: 215 sf • garage: 639 sf

All dimensions, features, specifications and square footages are approximate and subject to change without notice. Maps, plans, landscaping and elevation renderings are artist's conceptions, are not to scale, and may not accurately depict the homes or lots as they are built. © GHO Homes 2019. Revised March 21, 2024.



772.257.1100 • GHOHOMES.COM