

GHO HOMES

A GREEN BRICK PARTNER

6358 HIGH POINTE CIRCLE
VERO BEACH, FL 32967 | LOT 192**HIGH POINTE | VENETIAN**

Bed: 3 • Bath: 3 • Living SF: 2,584 • Total SF: 3,462

Move-in date: Move In Ready

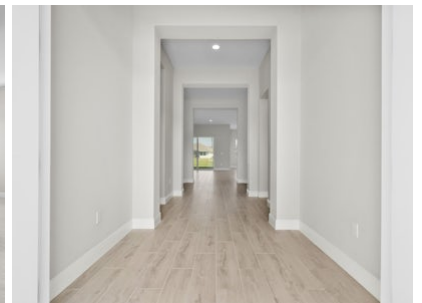
\$668,447**CONTACT****Nicole Morris**

P: 772.257.1100

C: 772.882.8990

nicolem@ghohomes.com

Embrace the elegance of the Venetian, a magnificent waterfront home currently under construction in the prestigious High Pointe community by GHO Homes. This spacious residence boasts 2584 sq. ft. of living space, adorned with grand double entry doors that welcome you into a world of luxury. Featuring 3 bedrooms, 3 baths, a den, and a 3-bay garage, this home offers ample space for comfortable living. Upgrades abound, including upgraded white kitchen cabinets with crown molding, quartz countertops, valance lighting and an upgraded subway tile backsplash. All three bathrooms & bar in the great room showcase quartz countertops for a touch of sophistication. Indulge your inner chef with the gourmet stainless steel kitchen package, complete with a single sink, range hood, microwave/oven wall combo & gas cooktop. The entire home is tiled with an upgraded wood-look tile, combining style with durability. Enjoy peace of mind with impact windows and slider doors throughout, and revel in the co[...]



Seller reserves the right to make changes or modifications to plans, maps, plan specifications, materials, Features, and colors without notice. Prices are subject to change without notice. Maps, plans, landscaping and elevation renderings are artist's conceptions, not to scale, and may not accurately depict the homes or lots as they are built. This brochure is for illustrative purposes only and not a part of a legal contract. Lic. #CBC051145

GHO HOMES

A GREEN BRICK PARTNER

6358 HIGH POINTE CIRCLE

VERO BEACH, FL 32967 | LOT 192

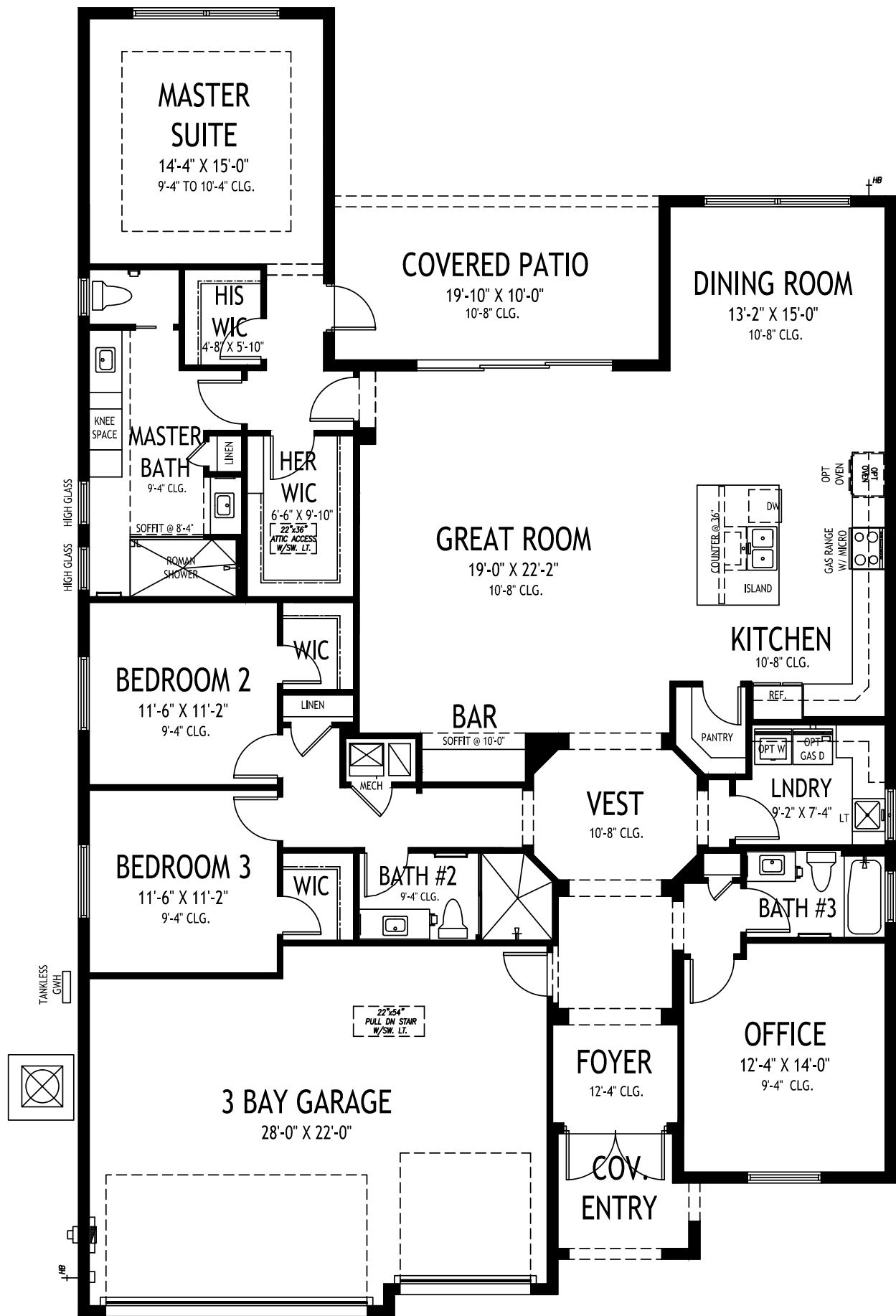
DS GHO HOMES
DESIGN STUDIO

772.257.1100 | GHOHOMES.COM

TAILOR MADE
GHO



Seller reserves the right to make changes or modifications to plans, maps, plan specifications, materials, Features, and colors without notice. Prices are subject to change without notice. Maps, plans, landscaping and elevation renderings are artist's conceptions, not to scale, and may not accurately depict the homes or lots as they are built. This brochure is for illustrative purposes only and not a part of a legal contract. Lic. #CBC051145



GHO HOMES

A GREEN BRICK PARTNER

VENETIAN

3 BEDS • DEN • 3 BATHS • 3 BAY GARAGE • 50' x 80' • 3,462 SF
A/C: 2,584 sf • covered entry: 61 sf • covered patio: 198 sf • garage: 619 sf

772.257.1100 • GHOHOMES.COM

All dimensions, features, specifications and square footages are approximate and subject to change without notice. Maps, plans, landscaping and elevation renderings are artist's conceptions, are not to scale, and may not accurately depict the homes or lots as they are built. © GHO Homes 2018. Revised August 1, 2022.

