



LUCAYA POINTE | CYPRESS

Bed: 2 • Bath: 2.5 • Living SF: 2,241 • Total SF: 3,209

Move-in date: February 2025

\$986,096

CONTACT

Diana Leever

P: 772.257.1100

C: 772.828.7074

dianal@ghohomes.com

Listen to the waterfall in this salt water pool home with travertine decking and screen the entire width of the house! It's a must have! 2 bedroom, den, 2 ½ baths, home with a 3-car tandem garage The Cypress welcomes you with a fabulous architectural design boasting large windows, tall ceilings, and open spaces. The 2nd bedroom and bath are privately located in the front of the house, next to a cozy den with double frosted glass swing doors with windows that have natural light entering into the center of the house. The open bright kitchen area features a generous walk-in pantry , and there is more than adequate room for your large round dining table and buffet with a beverage center. The owner's suite features a coffer ceiling with large windows overlooking the back of the house, large dual walk-in closets, linen closet, walk-in shower and it's own water closet with the brightness of a window. The expansive laundry room & large walk-in broom closet has a drop-in laundry sink and upper [...]





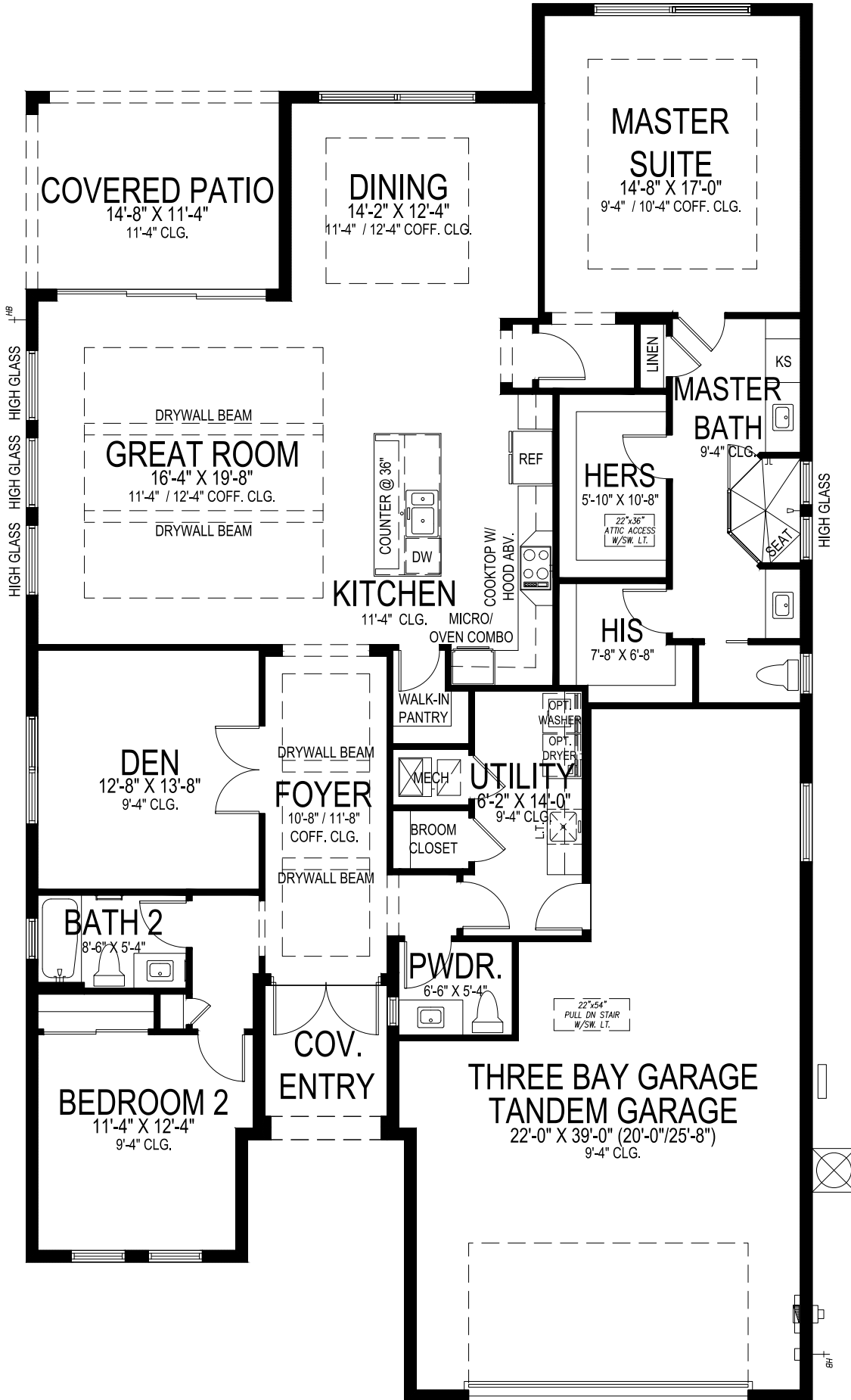
4226 LUCAYA POINTE WAY
VERO BEACH, FL 32967 | LOT 97



772.257.1100 | GHOHOMES.COM



Seller reserves the right to make changes or modifications to plans, maps, plan specifications, materials, Features, and colors without notice. Prices are subject to change without notice. Maps, plans, landscaping and elevation renderings are artist's conceptions, not to scale, and may not accurately depict the homes or lots as they are built. This brochure is for illustrative purposes only and not a part of a legal contract. Lic. #CBC051145



CYPRESS

2 BEDS • DEN • 2.5 BATHS • 3+ BAY GARAGE • 45' x 80' • 3,209 SF
A/C: 2,241 sf • covered entry: 52 sf • covered patio: 164 sf • garage: 752 sf

GHO HOMES

A GREEN BRICK PARTNER

772.257.1100 • GHOHOMES.COM

All dimensions, features, specifications and square footages are approximate and subject to change without notice. Maps, plans, landscaping and elevation renderings are artist's conceptions, are not to scale, and may not accurately depict the homes or lots as they are built. © GHO Homes 2020. Revised June 20, 2022.

