

GHO HOMES**237 STRAND TERRACE**

VERO BEACH, FL 32963 | LOT 03

A GREEN BRICK PARTNER

**THE STRAND | SAND DOLLAR GRANDE**

Bed: 3 • Bath: 4 • Living SF: 3,041 • Total SF: 4,453

Move-in date: Move In Ready

Open House: 02/23/2025 10:00 AM - 5:00 PM | \$1,700,000**CONTACT****Lisa Krynski**

P: 772.257.1100

C: 772.521.0954

lisak@ghohomes.com

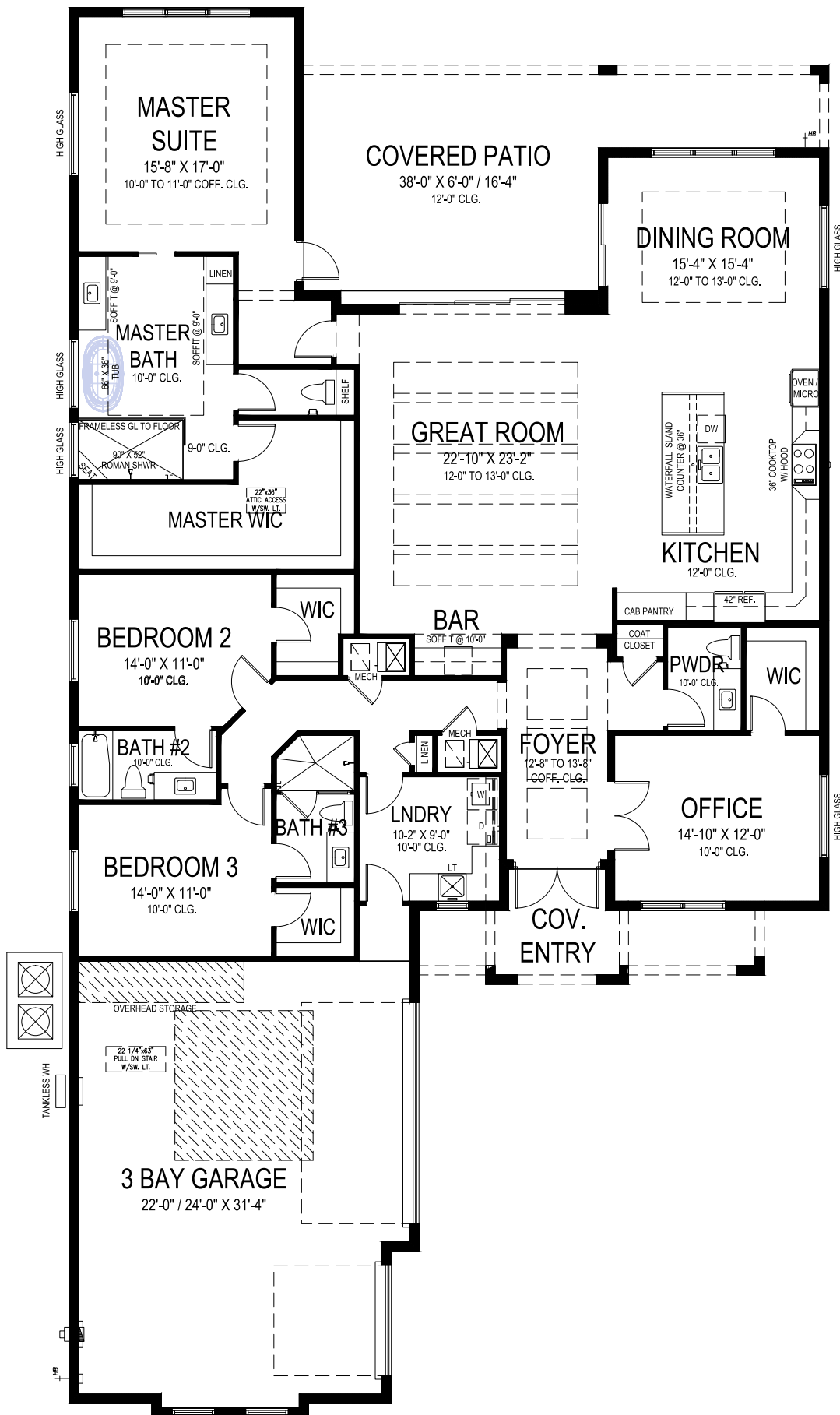
The home is located at The Strand, set between the Atlantic Ocean and the famous Jungle Trail offering deeded beach access. This home boasts exceptional finishes including a private salt chlorination pool, travertine pavers, and a screen enclosure. Additional finishes include wood-look tile, JennAir appliances including a cabinet front 42" built-in refrigerator, stainless steel hood, waterfall kitchen island, LED under-cabinet lighting, built-in beverage center, and Whirlpool washer & dryer. This home offers natural gas including 3 standard connections for the cooktop, tankless water heater, and dryer. With deeded beach access and a direct connection to the Jungle Trail, you are in a perfect location on the Treasure Coast. GHO has upgraded this home to include furnishings and lighting which makes this home complete.

**DS** GHO HOMES
DESIGN STUDIO

772.257.1100 | GHOHOMES.COM

TAILOR MADE
GHO

Seller reserves the right to make changes or modifications to plans, maps, plan specifications, materials, Features, and colors without notice. Prices are subject to change without notice. Maps, plans, landscaping and elevation renderings are artist's conceptions, not to scale, and may not accurately depict the homes or lots as they are built. This brochure is for illustrative purposes only and not a part of a legal contract. Lic. #CBC051145



GHO HOMES

A GREEN BRICK PARTNER

SAND DOLLAR GRANDE

3 BEDS • DEN • 3.5 BATHS • 3 BAY GARAGE • 55' x 102' • 4,453 SF
A/C: 3,041 sf • covered entry: 145 sf • covered patio: 448 sf • garage: 819 sf

All dimensions, features, specifications and square footages are approximate and subject to change without notice. Maps, plans, landscaping and elevation renderings are artist's conceptions, are not to scale, and may not accurately depict the homes or lots as they are built. © GHO Homes 2020. Revised March 16, 2023.



772.257.1100 • GHOHOMES.COM