

**GHO HOMES**

A GREEN BRICK PARTNER

**2251 GRAND HARBOR RESERVE SQUARE**

VERO BEACH, FL 32967 | LOT 26

**THE RESERVE AT GRAND HARBOR | OAKMONT 25**

Bed: 3 • Bath: 3.5 • Living SF: 2,821 • Total SF: 4,370

Move-in date: Move In Ready

**Open House: 02/23/2025 10:00 AM - 5:00 PM | \$1,807,239****CONTACT****Catherine Garofalo**

P: 772.257.1100

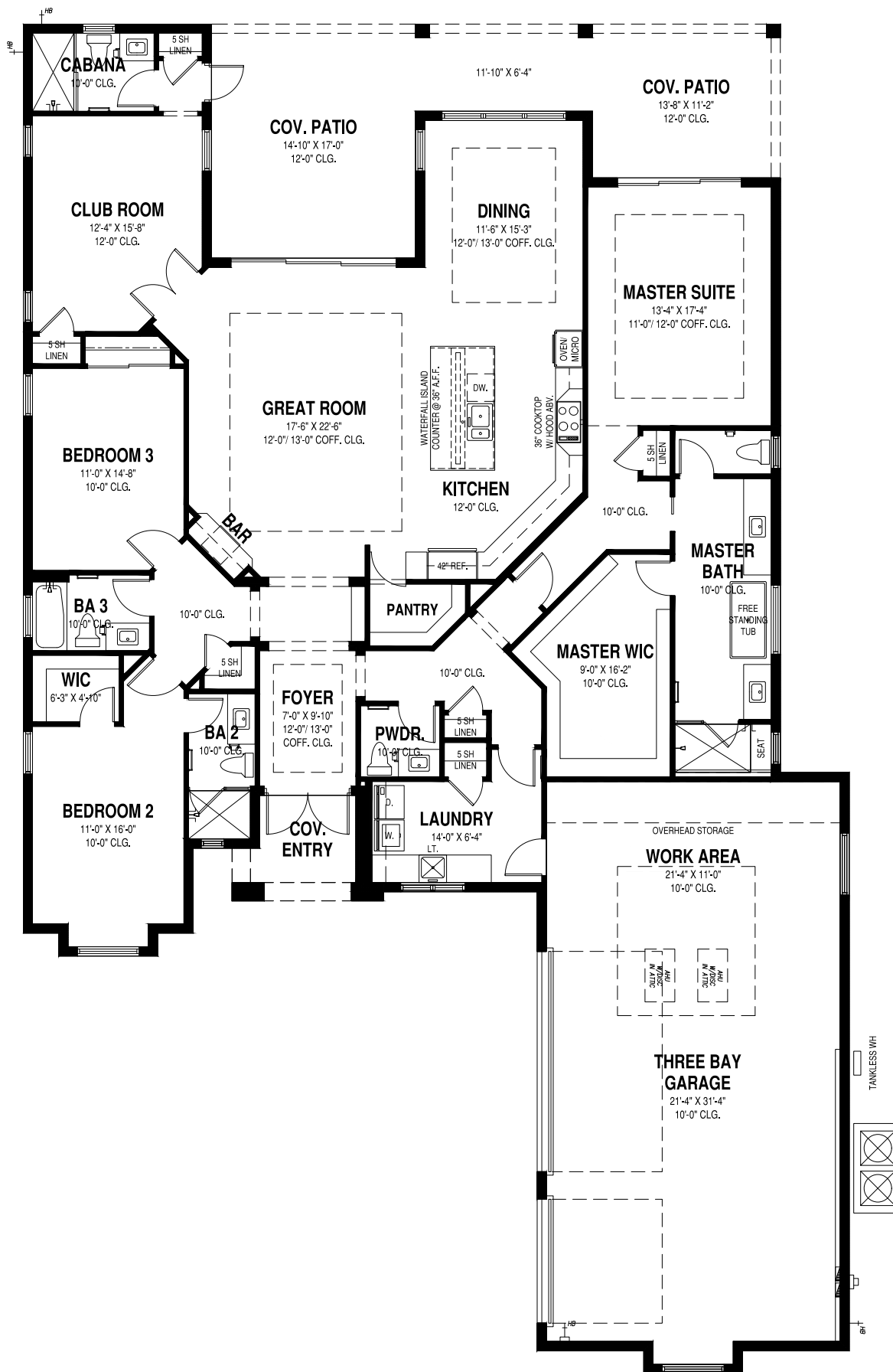
C: 772.342.0061

catg@ghohomes.com

Welcome to the Prestigious Golf and Country Club in Vero Beach at The Reserve in Grand Harbor. The community offers convenient proximity to shopping, dining, theaters, art museums, & downtown. This Oakmont home offers a Private Salt Water-screened Pool & Natural Gas Water Heater, 36" gas cooktop. Some of the outstanding features of this home includes: a gourmet kitchen with stacked kitchen cabinets with Soft Closing, a couple glass doors with glass shelving with puck lighting in Kitchen and in upper bar, Cafe Appliances, vented hood over the cooktop, waterfall quartz counter with mitered corners built-up edge to 2.5", Crown Molding and Quartz countertops throughout home. The Laundry includes a front-load washer and dryer, both on pedestals. A 50-amp circuit for future electric car charging stations in the garage finished with epoxy & color flake. PGT oversized Impact glass on all the doors and windows, Tile Roof, soaring Ceiling heights up to 13', natural wood shelving in t[...]

**DS GHO HOMES**  
DESIGN STUDIO**772.257.1100 | GHOHOMES.COM****TAILOR MADE**  
GHO

Seller reserves the right to make changes or modifications to plans, maps, plan specifications, materials, Features, and colors without notice. Prices are subject to change without notice. Maps, plans, landscaping and elevation renderings are artist's conceptions, not to scale, and may not accurately depict the homes or lots as they are built. This brochure is for illustrative purposes only and not a part of a legal contract. Lic. #CBC051145



# GHO HOMES

A GREEN BRICK PARTNER

## OAKMONT 25

3 BEDS • DEN • 3.5 BATHS • 3 BAY GARAGE • 60' x 98' • 4,323 SF  
A/C: 2,827 sf • covered entry: 63 sf • covered patio: 486 sf • garage: 947 sf

All dimensions, features, specifications and square footages are approximate and subject to change without notice. Maps, plans, landscaping and elevation renderings are artist's conceptions, are not to scale, and may not accurately depict the homes or lots as they are built. © GHO Homes 2024. Revised November 11, 2024.



772.257.1100 • GHOHOMES.COM