

GHO HOMES**2151 FALLS MANOR**

VERO BEACH, FL 32967 | LOT 66

A GREEN BRICK PARTNER

**THE FALLS AT GRAND HARBOR | BEACON**

Bed: 3 • Bath: 2 • Living SF: 1,893 • Total SF: 2,612

Move-in date: Move In Ready

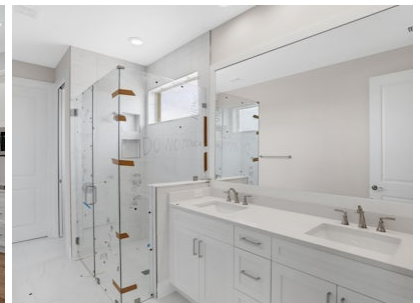
\$695,126**CONTACT****Catherine Garofalo**

P: 772.257.1100

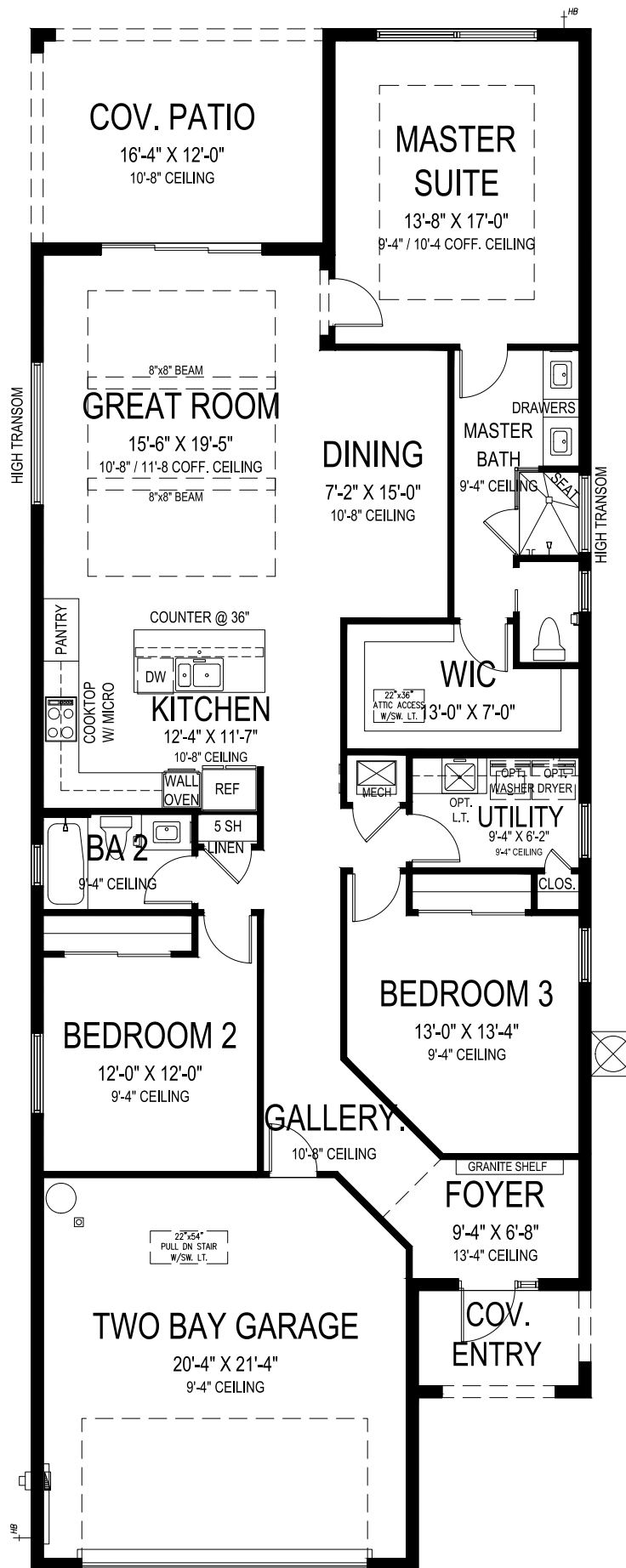
C: 772.342.0061

catg@ghohomes.com

This home is for you if you want a home in a tennis and golf club community. Whether you are taking a dip in the Grand Harbor Beach Club pool, playing golf on one of the two award-winning golf courses, or partaking in a game of tennis, there is something for you and everyone in your family at Grand Harbor Club. Within the Falls of Grand Harbor, you will find this impressive home, "The Beacon", a perfect place to call home. Some of the finishes on this home include Tile Floors Throughout, a Whirlpool Appliances package, a gourmet kitchen package, quartz countertops, crown molding, light valance, and white cabinets with soft-close drawers and doors. As a bonus, GHO will pay the initial upfront fee for the Sports membership, which includes the Grand Harbor Beach Club. Stop in and check us out! Call Cathy Garofalo for an appointment to see this home at 772-342-0061 or email catg@ghohomes.com


DS **GHO HOMES**
 DESIGN STUDIO
772.257.1100 | GHOHOMES.COM
TAILOR MADE
 GHO


Seller reserves the right to make changes or modifications to plans, maps, plan specifications, materials, Features, and colors without notice. Prices are subject to change without notice. Maps, plans, landscaping and elevation renderings are artist's conceptions, not to scale, and may not accurately depict the homes or lots as they are built. This brochure is for illustrative purposes only and not a part of a legal contract. Lic. #CBC051145



GHO HOMES

A GREEN BRICK PARTNER

BEACON

3 BEDS • 2 BATHS • 2 BAY GARAGE • 31'-4" x 86'-4" • 2,612 SF
A/C: 1,893 sf • covered entry: 58 sf • covered patio: 196 sf • garage: 465 sf

All dimensions, features, specifications and square footages are approximate and subject to change without notice. Maps, plans, landscaping and elevation renderings are artist's conceptions, are not to scale, and may not accurately depict the homes or lots as they are built. © GHO Homes 2022. Revised April 19, 2023.



772.257.1100 • GHOHOMES.COM