



SEAGLASS | SEABREEZE GRANDE

Bed: 3 • Bath: 3 • Living SF: 2,254 • Total SF: 3,069

\$1,392,000

CONTACT

Lisa Krynski

P: 772.257.1100

C: 772.521.0954

lisak@ghohomes.com

The Seabreeze Grande is currently under construction and is situated in a charming Old Florida setting, surrounded by lush landscaping—making it a picturesque place to call home. This villa-home features exceptional finishes, including 9x47 porcelain wood plank tile flooring, volume ceilings, crown molding, and tongue-and-groove wood detail coffer ceilings. The reconfigured master bath boasts a free-standing tub, a glass-enclosed shower, and quartz countertops. It also includes Café appliances and a bar area with a beverage center. There is still time to customize some of the interior finishes and colors. This home is designed for outdoor entertaining, featuring a pool, a travertine paver pool deck, and a screen enclosure. For more information, please contact Lisa Krynski.



772.257.1100 | GHOHOMES.COM



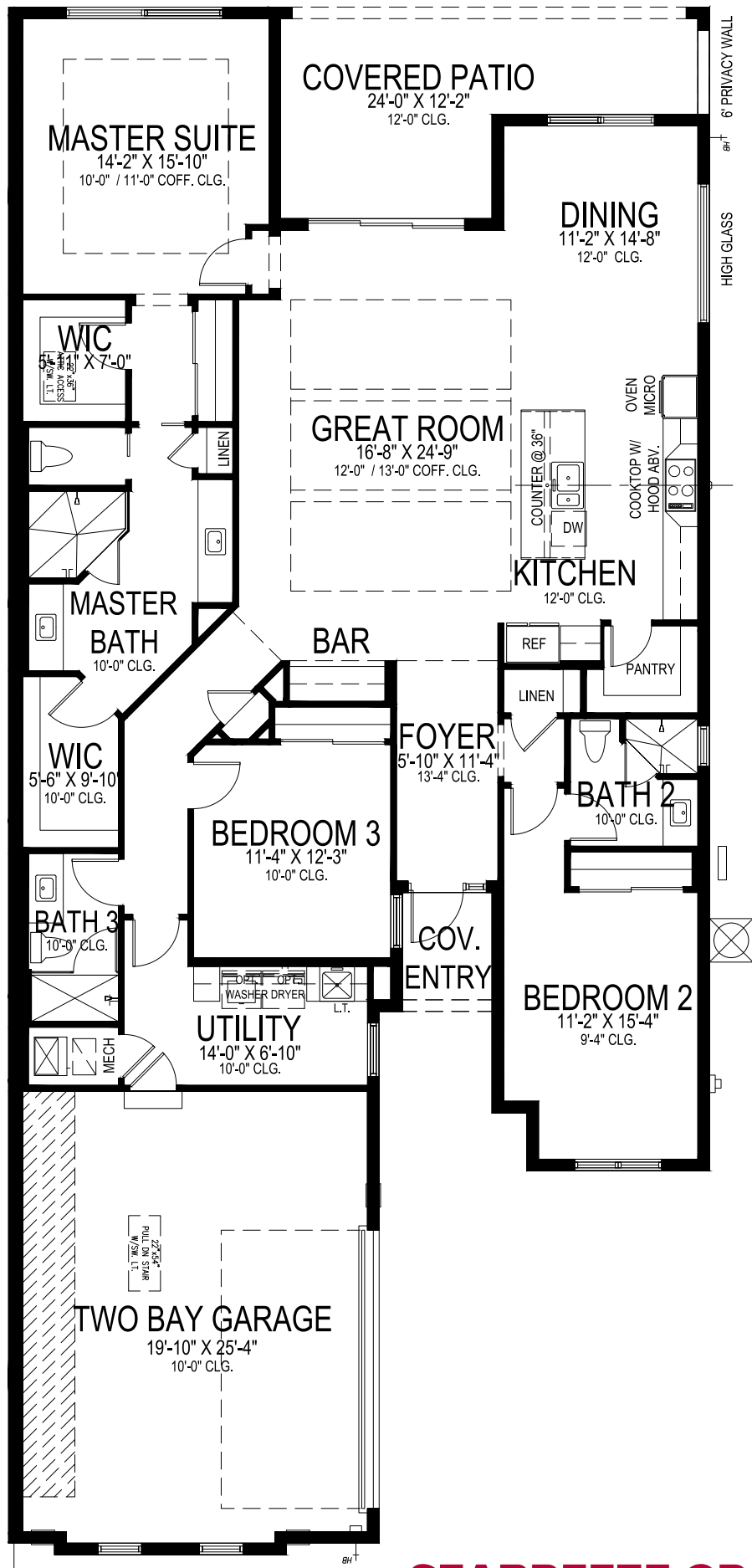
Seller reserves the right to make changes or modifications to plans, maps, plan specifications, materials, Features, and colors without notice. Prices are subject to change without notice. Maps, plans, landscaping and elevation renderings are artist's conceptions, not to scale, and may not accurately depict the homes or lots as they are built. This brochure is for illustrative purposes only and not a part of a legal contract. Lic. #CBC051145



1988 FROSTED TURQUOISE WAY
VERO BEACH, FL 32963



Seller reserves the right to make changes or modifications to plans, maps, plan specifications, materials, Features, and colors without notice. Prices are subject to change without notice. Maps, plans, landscaping and elevation renderings are artist's conceptions, not to scale, and may not accurately depict the homes or lots as they are built. This brochure is for illustrative purposes only and not a part of a legal contract. Lic. #CBC051145



GHO HOMES

A GREEN BRICK PARTNER

SEABREEZE GRANDE

3 BEDS • 3 BATHS • 2 BAY GARAGE • 40' x 89' • 3,069 SF
A/C: 2,254 sf • covered entry: 35 sf • covered patio: 225 sf • garage: 555 sf

All dimensions, features, specifications and square footages are approximate and subject to change without notice. Maps, plans, landscaping and elevation renderings are artist's conceptions, are not to scale, and may not accurately depict the homes or lots as they are built. © GHO Homes 2022. Revised July 5, 2023.



772.257.1100 • GHOHOMES.COM