

GHO HOMES

A GREEN BRICK PARTNER

1938 FROSTED TURQUOISE WAY

VERO BEACH, FL 32963 | LOT 60

**SEAGLASS | SEABREEZE GRANDE**

Bed: 3 • Bath: 3 • Living SF: 2,254 • Total SF: 3,069

Move-in date: Move-in Ready

\$1,435,000**CONTACT****Lisa Krynski**

P: 772.257.1100

C: 772.521.0954

lisak@ghohomes.com

The Seabreeze Grande is a 3-bedroom, 3-bath villa with 2254 finished square feet, situated in a perfect Ol' Florida setting. The property features a pool with a waterfall feature, travertine pavers, and a screen enclosure, perfect for a carefree island lifestyle. Some of the outstanding finishes include solid core interior doors, wood-look tile flooring (Arhus Paja), volume ceilings, Quartz countertops, Cafe appliances (including a 42" built-in side-by-side refrigerator), stacked Canvas-off white cabinets in the kitchen with a darker cabinet-center island, an entertaining bar with a beverage refrigerator, washer & dryer, and more! This home is move-in-ready and a perfect place to call home in a private lush setting. Call Lisa Krynski for details!


DS **GHO HOMES**
 DESIGN STUDIO
772.257.1100 | **GHOHOMES.COM**
TAILOR MADE
 GHO

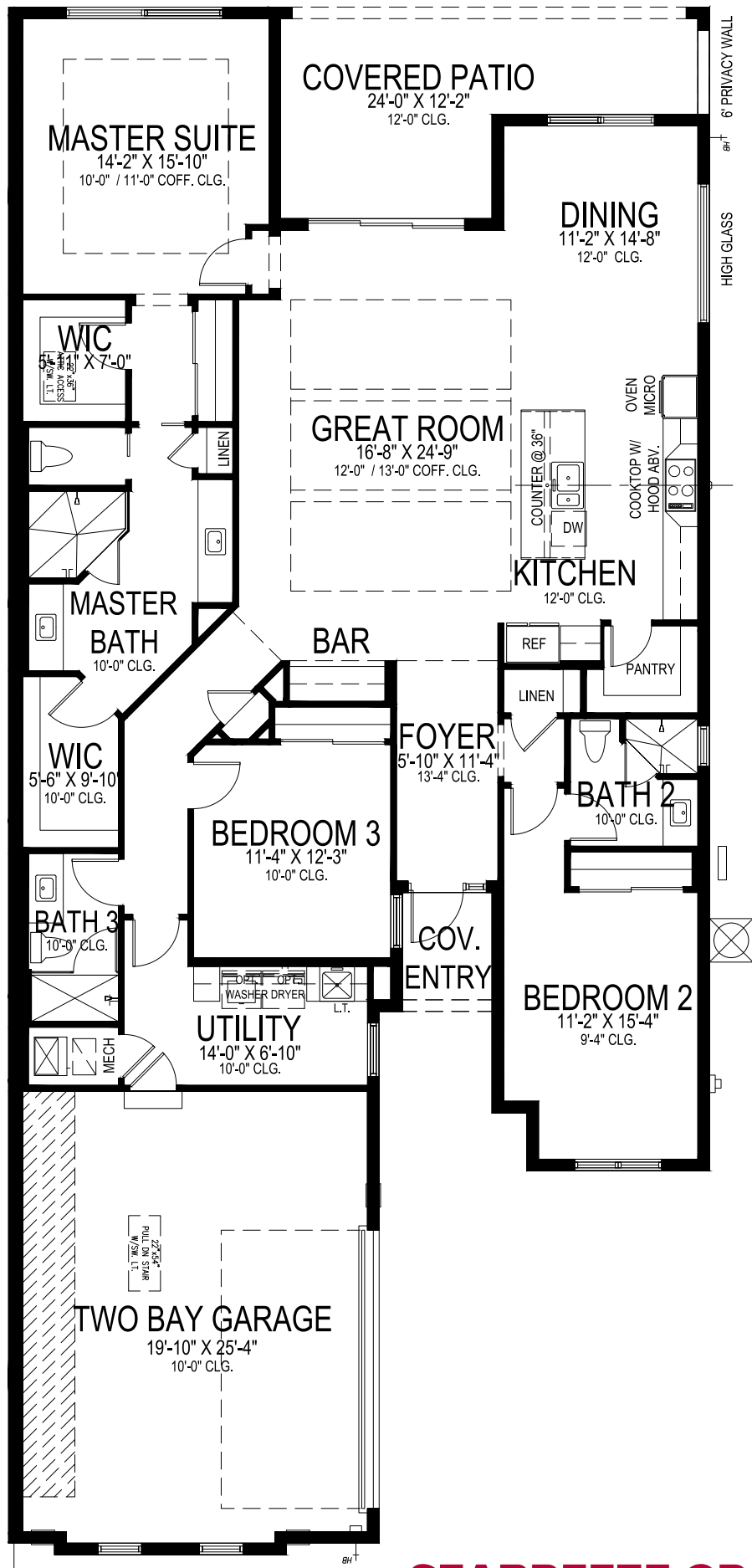

Seller reserves the right to make changes or modifications to plans, maps, plan specifications, materials, Features, and colors without notice. Prices are subject to change without notice. Maps, plans, landscaping and elevation renderings are artist's conceptions, not to scale, and may not accurately depict the homes or lots as they are built. This brochure is for illustrative purposes only and not a part of a legal contract. Lic. #CBC051145



1938 FROSTED TURQUOISE WAY
VERO BEACH, FL 32963 | LOT 60



Seller reserves the right to make changes or modifications to plans, maps, plan specifications, materials, Features, and colors without notice. Prices are subject to change without notice. Maps, plans, landscaping and elevation renderings are artist's conceptions, not to scale, and may not accurately depict the homes or lots as they are built. This brochure is for illustrative purposes only and not a part of a legal contract. Lic. #CBC051145



GHO HOMES

A GREEN BRICK PARTNER

SEABREEZE GRANDE

3 BEDS • 3 BATHS • 2 BAY GARAGE • 40' x 89' • 3,069 SF
A/C: 2,254 sf • covered entry: 35 sf • covered patio: 225 sf • garage: 555 sf

All dimensions, features, specifications and square footages are approximate and subject to change without notice. Maps, plans, landscaping and elevation renderings are artist's conceptions, are not to scale, and may not accurately depict the homes or lots as they are built. © GHO Homes 2022. Revised July 5, 2023.



772.257.1100 • GHOHOMES.COM