

GHO HOMES**170 SE RIO ANGELICA**

PORT ST LUCIE, FL 34984 | LOT 94

A GREEN BRICK PARTNER

**TESORO CLUB | KEENAN**

Bed: 3 • Bath: 3.5 • Living SF: 3,299 • Total SF: 4,651

Move-in date: Move In Ready

Open House: 02/23/2025 10:00 AM - 5:00 PM | \$1,899,990**CONTACT****Tripp Barfield**

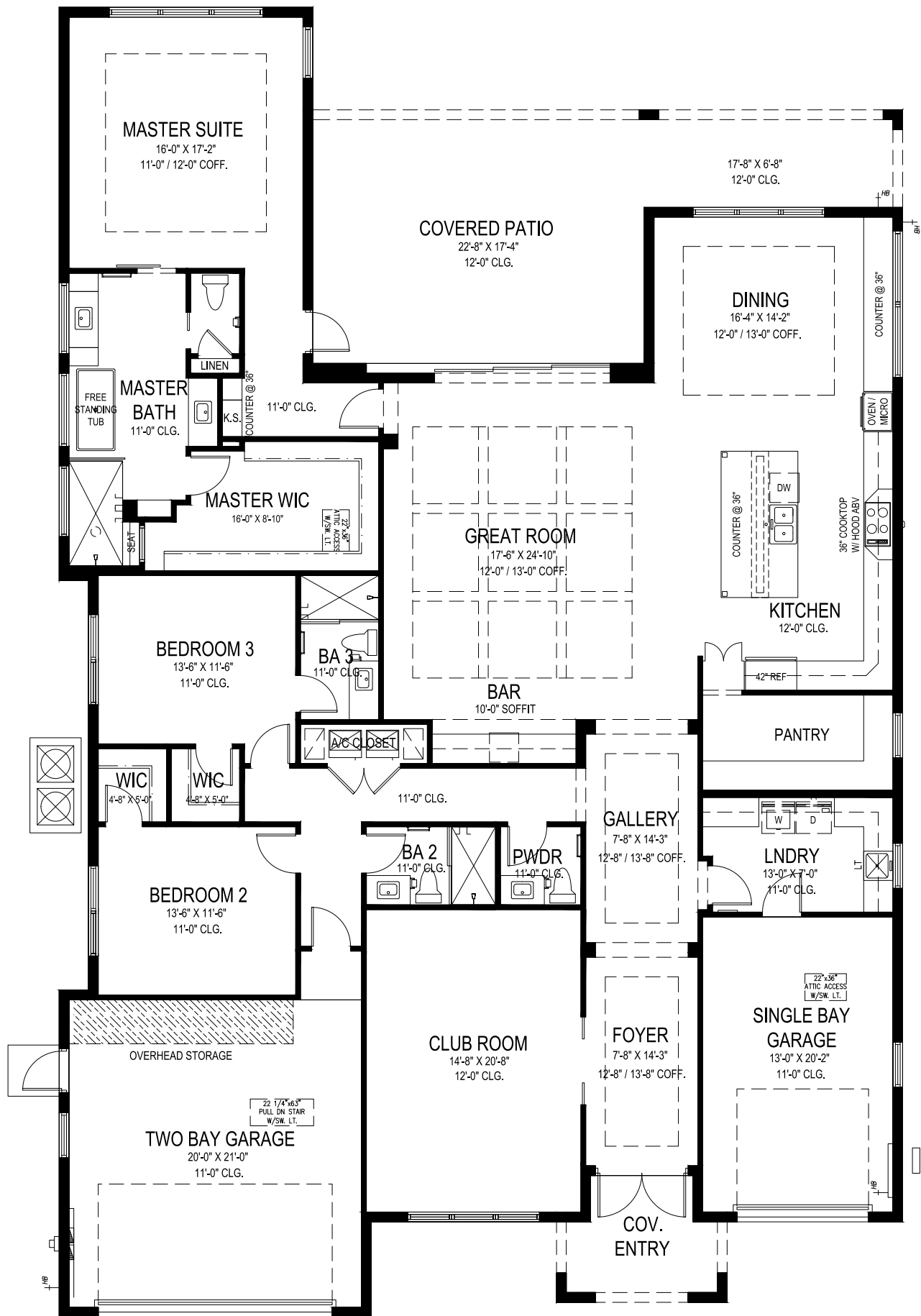
P: 772.345.4050

tesoroclub@ghohomes.com

This home is located in the heart of "Tesoro", the Treasure Coasts premier golf club. The "Keenan" presents the perfect design and layout that enhances that Florida lifestyle. Entertaining at its best with a large oversized back covered patio including travertine pavers and a professionally designed pool enhanced with sun shelf and a water feature. Other outstanding finishes include 12ft. volume ceilings, oversized club room with wet bar, spacious kitchen including butlers pantry, oversized center island, stacked cabinets, Cafe appliances including 42" built-in refrigerator, wall oven/microwave combo, washer & dryer and 32 x 32 tile flooring throughout. This home is located on a perfect lot in a premier golf club community of Tesoro, offering an impressive coastal-contemporary designed home . Bring your golf clubs and enjoy the best golf experience on the Treasure Coast!

**DS** GHO HOMES
DESIGN STUDIO**772.257.1100 | GHOHOMES.COM****TAILOR MADE**
GHO

Seller reserves the right to make changes or modifications to plans, maps, plan specifications, materials, Features, and colors without notice. Prices are subject to change without notice. Maps, plans, landscaping and elevation renderings are artist's conceptions, not to scale, and may not accurately depict the homes or lots as they are built. This brochure is for illustrative purposes only and not a part of a legal contract. Lic. #CBC051145



GHO HOMES

A GREEN BRICK PARTNER

KEENAN

3 BEDS • DEN • 3.5 BATHS • 3 BAY GARAGE • 57'-8" x 89'-6" • 4,651 SF
A/C: 3,299 sf • covered entry: 86 sf • covered patio: 511 sf • garages: 755 sf

All dimensions, features, specifications and square footages are approximate and subject to change without notice. Maps, plans, landscaping and elevation renderings are artist's conceptions, are not to scale, and may not accurately depict the homes or lots as they are built. © GHO Homes 2024. Revised June 20, 2024.



772.257.1100 • GHOHOMES.COM