

GHO HOMES**14347 SW BELTERRA DRIVE**
PORT ST LUCIE, FL 34987

A GREEN BRICK PARTNER

**BELTERRA | MARIPOSA**

Bed: 4 • Bath: 3 • Living SF: 2,636 • Total SF: 3,509

Move-in date: Fall 2025

\$838,530**CONTACT****Jennifer Smith**

P: 561.329.8863

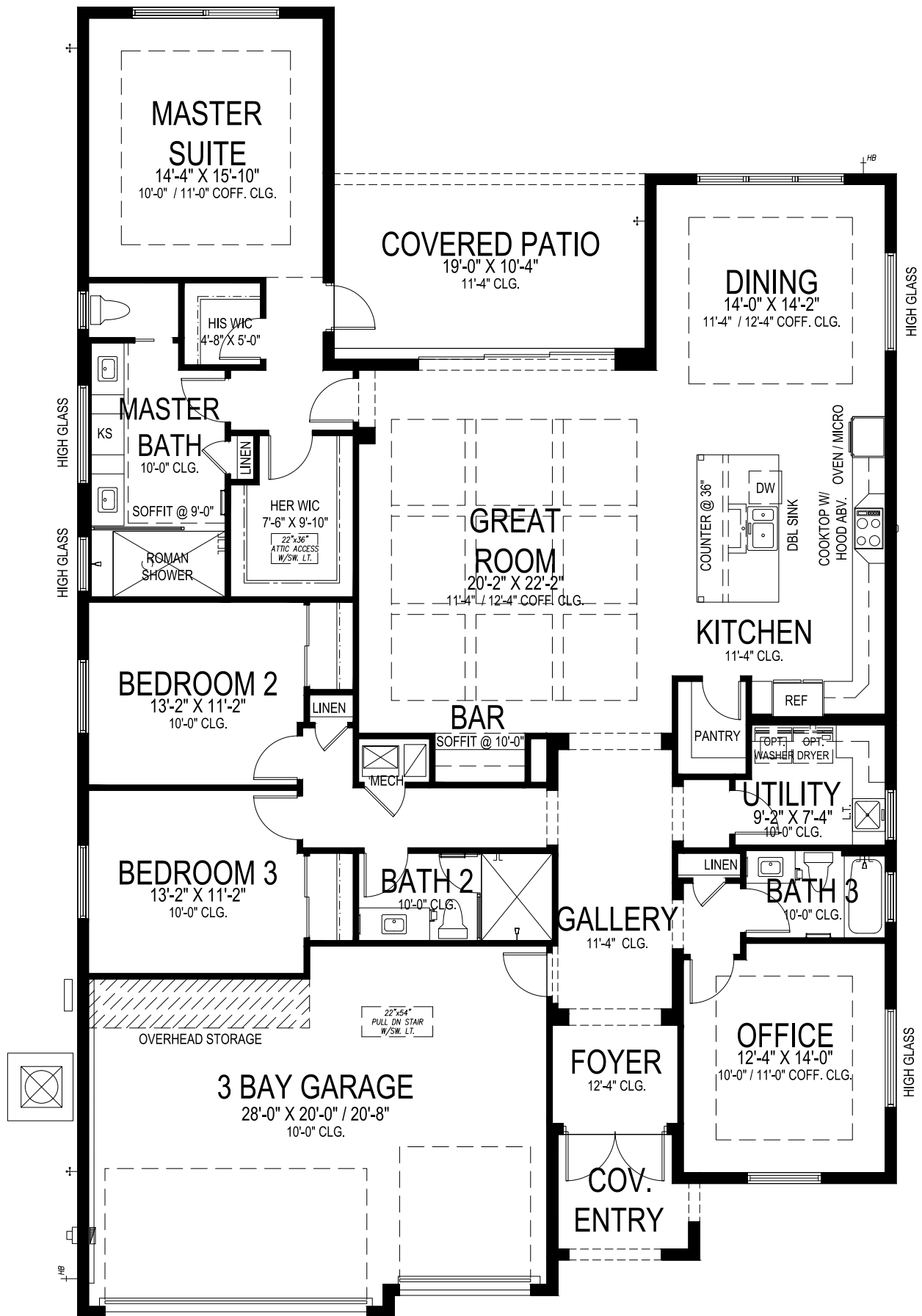
C: 561.329.8863

JenniferS@ghohomes.com

Luxury Large 4 bedroom home! Enlarged Pool with 2 raised walls with 2 waterfalls, Additional bench area, and Extended Pool Deck and Screen Enclosure! BELTERRA is the newest luxury boutique-community to emerge inside of the highly sought after Tradition. All ages, single family and gated. BELTERRA has resort lifestyle amenities including a clubhouse with tennis, pickleball and basketball courts, wine lockers, a billiards and card room, resort-style swimming pool and a state-of-the-art fitness center. Pictures are of a previous model built.

**DS** GHO HOMES
DESIGN STUDIO**772.257.1100 | GHOHOMES.COM****TAILOR MADE**
— GHO —

Seller reserves the right to make changes or modifications to plans, maps, plan specifications, materials, Features, and colors without notice. Prices are subject to change without notice. Maps, plans, landscaping and elevation renderings are artist's conceptions, not to scale, and may not accurately depict the homes or lots as they are built. This brochure is for illustrative purposes only and not a part of a legal contract. Lic. #CBC051145



MARIPOSA

3 BEDS • DEN • 3 BATHS • 3 BAY GARAGE • 50' x 80' • 3,509 SF
A/C: 2,636 sf • covered entry: 61 sf • covered patio: 196 sf • garage: 616 sf

GHO HOMES

A GREEN BRICK PARTNER

772.257.1100 • GHOHOMES.COM

All dimensions, features, specifications and square footages are approximate and subject to change without notice. Maps, plans, landscaping and elevation renderings are artist's conceptions, are not to scale, and may not accurately depict the homes or lots as they are built. © GHO Homes 2021. Revised November 9, 2023.

