

**GHO HOMES****12476 SW SUNRISE LAKE TERRACE**

PORT ST LUCIE, FL 34987 | LOT 358

A GREEN BRICK PARTNER

**LAKE PARK AT TRADITION | LUCIDA JEM**

Bed: 3 • Bath: 2 • Living SF: 1,879 • Total SF: 2,520

Move-in date: Move In Ready

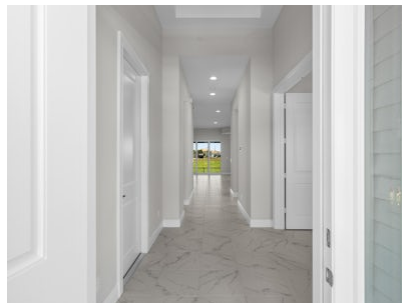
**\$458,127****CONTACT****Nick Presner**

P: 772.257.1100

C: 772.361.9867

NickP@ghohomes.com

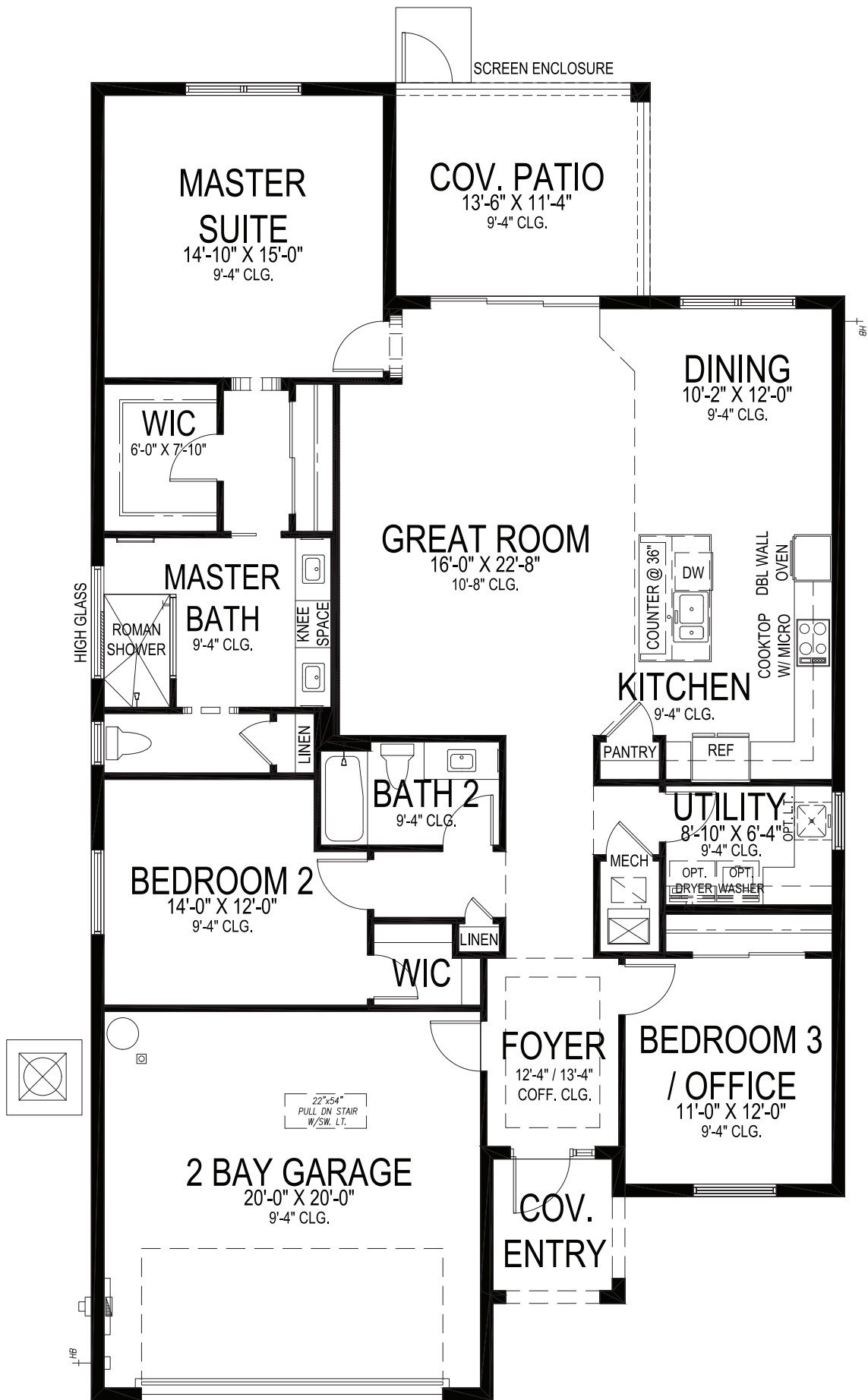
PRICE IMPROVEMENT FROM \$513,127 REDUCED to \$458,127!!! This popular LUCIDA JEM model sits on a wonderful homesite backing to a wide-open common area with a partial lake view from the lanai. The kitchen has beautiful quartz countertops, white Maple Shaker style doors with a double oven and cooktop plus beautiful glass tile backsplash. The master bath offers a huge Roman shower with seat, frameless glass wall and double sinks with a dressing vanity.

**DS** GHO HOMES  
DESIGN STUDIO

772.257.1100 | GHOHOMES.COM

**TAILOR MADE**  
— GHO —

Seller reserves the right to make changes or modifications to plans, maps, plan specifications, materials, Features, and colors without notice. Prices are subject to change without notice. Maps, plans, landscaping and elevation renderings are artist's conceptions, not to scale, and may not accurately depict the homes or lots as they are built. This brochure is for illustrative purposes only and not a part of a legal contract. Lic. #CBC051145



# GHO HOMES

A GREEN BRICK PARTNER

## LUCIDA JEM

3 BEDS • 2 BATHS • 2 BAY GARAGE • 40' x 70' • 2,520 SF  
 A/C: 1,879 sf • covered entry: 52 sf • covered patio: 152 sf • garage: 436 sf

772.257.1100 • GHOHOMES.COM

All dimensions, features, specifications and square footages are approximate and subject to change without notice. Maps, plans, landscaping and elevation renderings are artist's conceptions, are not to scale, and may not accurately depict the homes or lots as they are built. © GHO Homes 2021. Revised November 11, 2021.

