

GHO HOMES**110 SE VIA VERONA**

PORT ST LUCIE, FL 34984 | LOT 16

A GREEN BRICK PARTNER

**TESORO CLUB | ALESSIA**

Bed: 3 • Bath: 3.5 • Living SF: 3,274 • Total SF: 4,625

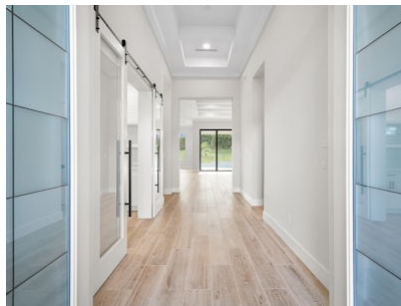
Move-in date: Move In Ready

Open House: 02/23/2025 10:00 AM - 5:00 PM | \$1,655,990**CONTACT****Tripp Barfield**

P: 772.345.4050

tesoroclub@ghohomes.com

A unique opportunity to live and enjoy all the amenities in this exceptional Golf Club community "Tesoro". The "Alessia" is currently under construction and will be completed Oct/Nov (2024). The back patio is a perfect place for entertaining with an extraordinarily designed pool including a water feature, oversized travertine tiled patio and pool deck with amazing golf course views. Some of the outstanding finishes include 12-ft. volume ceilings, entertaining bar in great room, stacked kitchen cabinets, oversized central island, walk-in pantry, quartz counter-tops, Cafe appliances including 42" built-in refrigerator, gas cook-top and wall oven/microwave combo, and 9x 47 Arhus Paja wood tile flooring. The primary suite offers an expansive walk-in-custom closet, his/her vanities, a free-standing tub, and large walk-in shower. If you have always wanted to live within a premier golf club community, this is the perfect place to call home!

**DS** GHO HOMES
DESIGN STUDIO

772.257.1100 | GHOHOMES.COM

TAILOR MADE
GHO

Seller reserves the right to make changes or modifications to plans, maps, plan specifications, materials, Features, and colors without notice. Prices are subject to change without notice. Maps, plans, landscaping and elevation renderings are artist's conceptions, not to scale, and may not accurately depict the homes or lots as they are built. This brochure is for illustrative purposes only and not a part of a legal contract. Lic. #CBC051145



GHO HOMES

A GREEN BRICK PARTNER

ALESSIA

3 BEDS • DEN • 3.5 BATHS • 3 BAY GARAGE • 58' x 85' • 4,625 SF
 A/C: 3,274 sf • covered entry: 190 sf • covered patio: 438 sf • garage: 723 sf

772.257.1100 • GHOHOMES.COM

All dimensions, features, specifications and square footages are approximate and subject to change without notice. Maps, plans, landscaping and elevation renderings are artist's conceptions, are not to scale, and may not accurately depict the homes or lots as they are built. © GHO Homes 2023. Revised September 20, 2023.

