



# COMMUNITY PRICE LIST

Created: Sep-27-2020

## Segovia Lake

### Floorplans

Floorplan	Bed	Bath	Den	Garage	Sq.Ft.	Priced From
<b>Avila</b>	2	2.5	Yes	2+ Bay	2,098	<b>TBD</b>
<b>Camino</b>	3	2	No	3 Bay	1,899	<b>TBD</b>

All prices above include a standard home site from GHO's collection of Segovia Phase 1 lots.

Some lot premiums may apply.

All homes include GHO's Ultimate Standard Features specific to Segovia.

See the community features list for specific details.

### To Learn More About These Homes Please Contact

Nicole Morris 772.257.1100 Cell: 772.882.8990 [nicolem@ghohomes.com](mailto:nicolem@ghohomes.com)

**GHO HOMES** 772.257.1100 | [ghohomes.com](http://ghohomes.com)



Seller reserves the right to make changes or modifications to plans, maps, plan specifications, materials, features, and colors without notice. Prices are subject to change without notice. Maps, plans, landscaping and elevation renderings are artist's conceptions, are not to scale, and may not accurately depict the homes or lots as they are built. This brochure is for illustrative purposes only and not a part of a legal contract. Picture and floor plan shown above is likely not the actual home being offered, but a similar home/model.

# SEGOVIA LAKE

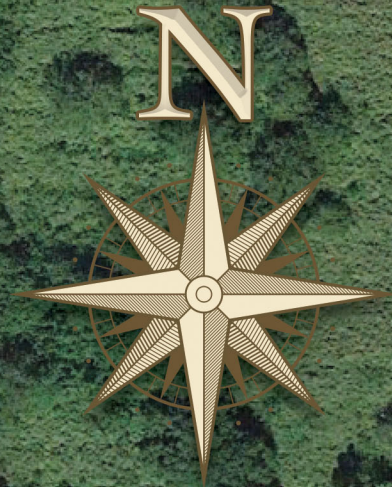
-  Phase 1
-  Phase 2
-  Phase 3
-  Models



58th Avenue

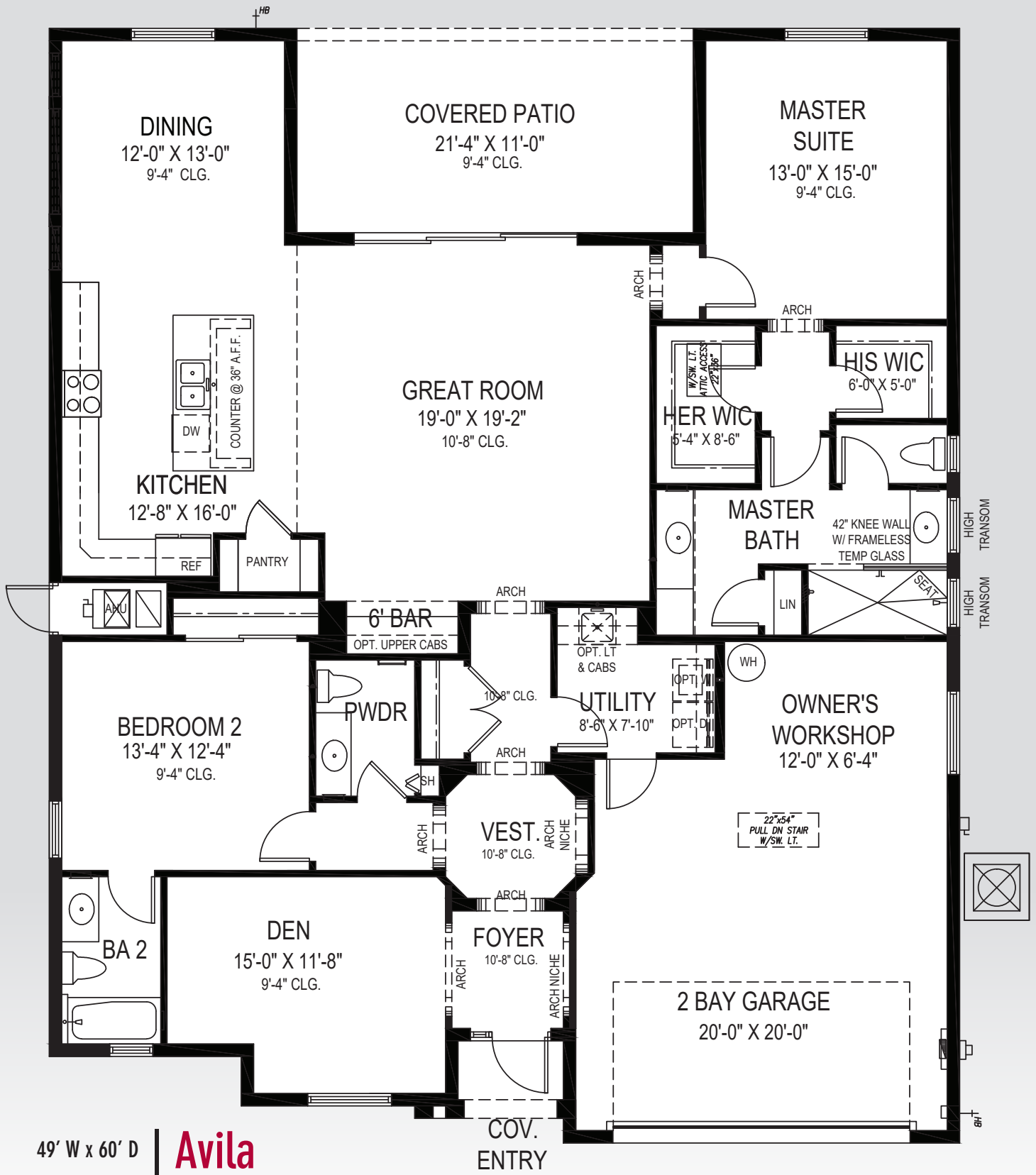
16th Street

58th Avenue



All dimensions, features, specifications and square footages are approximate and subject to change without notice. Maps, plans, landscaping and elevation renderings are artist's conceptions, are not to scale, and may not accurately depict the homes or lots as they are built.

**GHO  
HOMES**  
WWW.GHOHOMES.COM



49' W x 60' D | **Avila**

# GHO HOMES

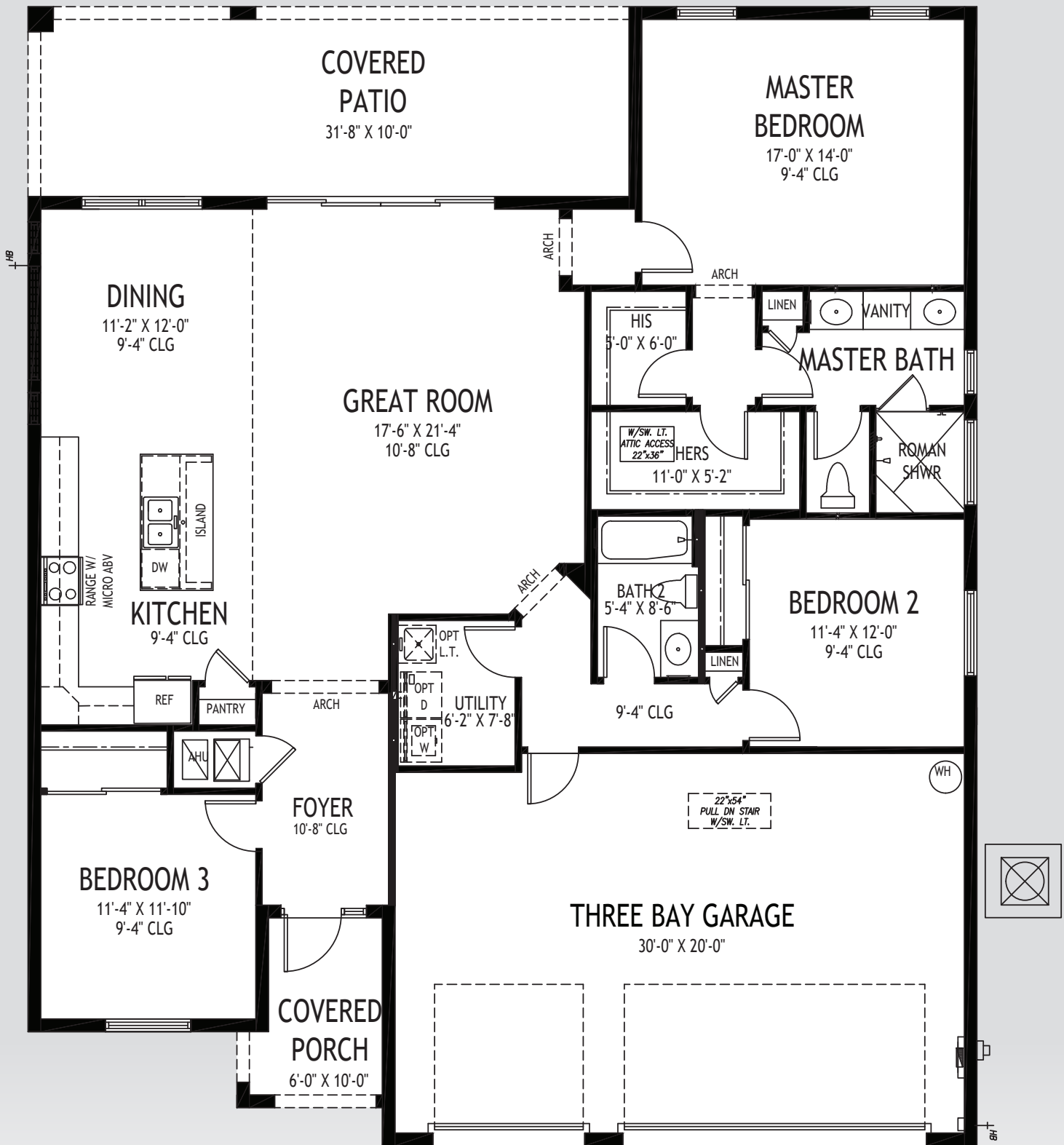
A GREEN BRICK PARTNER

772.257.1100 • GHOHOMES.COM

## APPROXIMATE AREAS

Air Conditioned .... 2,098 Sq. Ft.  
 Covered Entry ..... 25 Sq. Ft.  
 Covered Patio ..... 235 Sq. Ft.  
 2 Bay Garage ..... 504 Sq. Ft.  
**TOTAL ..... 2,862 Sq. Ft.**





50' W x 60' D | **Camino**

# GHO HOMES

A GREEN BRICK PARTNER

772.257.1100 • GHOHOMES.COM

## APPROXIMATE AREAS

- Air Conditioned .....1,899 Sq. Ft.
- Covered Entry .....65 Sq. Ft.
- Covered Patio ..... 313 Sq. Ft.
- 3 Bay Garage ..... 636 Sq. Ft.
- TOTAL .....2,913 Sq. Ft.**



All dimensions, features, specifications and square footages are approximate and subject to change without notice. Maps, plans, landscaping and elevation renderings are artist's conceptions, are not to scale, and may not accurately depict the homes or lots as they are built. © GHO Homes 2017. Revised May 3, 2018.



# COMMUNITY FEATURES LIST

## Segovia Lake

Created: Sep-27-2020

### Construction Features

- **Structural Design Per Florida Current Building Codes and Design Standards**
- ☑ **Double Row Steel & Concrete Bond Beam**
- ☑ **Plywood 5/8" (19/32) Roof Sheathing (no particle board)**
- Concrete Slab on Grade with Steel Reinforcement and Fibermesh Concrete
- **Sentricon Termite Treatment and Control System - 1 year service included**
- **Concrete Block Construction with Concrete and Steel Reinforcement**
- **Professionally Engineered Roof Trusses with Hurricane Straps**
- Concrete Based Textured Exterior Wall Finish
- ☑ **Impact Glass Front Windows and Front Door Sidelight**
- Steel Hurricane Shutters for all Non-Impact Glass Windows and Doors
- Underground County/City Electrical, Water and Sewer Connections
- Underground Connection to FPL Supplied Electrical Power

### Exterior Features

- Dimensional Roof Shingles with Limited Lifetime Warranty - Color "Weathered Wood"
- ☑ **White Aluminum Frame Dual Pane Insulated Low-E Glass Windows and Sliding Glass Doors - per plan**
- **Wind Rated Garage Doors with Remote-Controlled Openers (2 remotes)**
- **Paver Driveway, Front Walks and Rear Covered Patio Floor**
- Exterior Garden Hose Connections (2)
- Exterior GFI Electric Outlets (2)
- ☑ **Fiberglass Raised-Panel 8' Front Doors with Clear Impact Glass Single Lite Sidelites - per plan**
- **Professionally Designed Landscaped Package and Floratam Sod**
- **Automatic Underground Irrigation System, Irrigation Water supplied by Community Master Pump**
- **Sherwin Williams Exterior Doors and Garage Door Paint - A100 Exterior Acrylic Latex**
- **Sherwin Williams Loxon Exterior Paint - Acrylic Primer and Top Coat**

### Utility Room and Garage

- Drop Down Stairs to Attic Area
- ☑ **LED Lighting Provided for Garage and Utility Room**

**GHO HOMES** 772.257.1100 | ghohomes.com



Seller reserves the right to make changes or modifications to plans, maps, plan specifications, materials, features, and colors without notice. Prices are subject to change without notice. Maps, plans, landscaping and elevation renderings are artist's conceptions, are not to scale, and may not accurately depict the homes or lots as they are built. This brochure is for illustrative purposes only and not a part of a legal contract. Picture and floor plan shown above is likely not the actual home being offered, but a similar home/model.



# COMMUNITY FEATURES LIST

## Segovia Lake

Created: Sep-27-2020

### Gourmet Kitchens

- ☑ **Wood Raised Panel Cabinet Doors 42" Uppers - "Saybrook Series" (GHO Level 1)**
- ☑ **Granite or Quartz Kitchen Counter Top, with 4 inch back splash, layout per plan (GHO Level 1 Selections)**
  - Kitchen Faucet: Pull Out Spray - Stainless Steel Finish
  - **Stainless Steel Undermount Kitchen Sink 70/30 Split**
  - **Whirlpool Stainless Steel Finish Appliance Package**
  - **Whirlpool 25 cuft Side by Side Refrigerator, LED, Glass Shelves**
  - **Whirlpool Over the Range Microwave with Electric Touch Controls**
  - **Whirlpool Electric Range, Dual Radiant, Self Cleaning and Frozen Bake Technology**
  - **Whirlpool 5 Cycle Dishwasher, Stainless Steel Tub, Sensor/Memory Cycles**
  - **Food Waste Garbage Disposal with Air Switch**
  - Flooring: Ceramic Tile in Kitchen and Breakfast Rooms per plan
  - **Walk-in Pantry with Vinyl Clad Ventilated Shelving - per plan**

### Luxury Bathrooms

- ☑ **Granite or Quartz Bath Vanity Top with White Under-Mount Sink - all baths**
  - ☑ **Oversized Walk-In Roman Showers - per plan**
    - **Built in Shower Seat in Master Shower, Ceramic Tile Finish - per plan**
    - **Built in Shower Soap Niche in all Showers**
    - **Clear Glass Shower Enclosures or Glass Panels - per plan**
  - ☑ **Wood Raised Panel Vanity Doors, Raised Height Vanities - Saybrook Series (GHO Level 1)**
    - **His and Her Separate Vanities and Sinks - per plan**
    - Enamel Steel Tub/Shower combo in Secondary Bathroom(s)
  - ☑ **Ceramic Tile Bathroom Floors with Walls and Shower Floors - Choice of Deco Wall Tile Packages with Listello**
- Features all Baths (GHO Level 1 Selections)**
- Bathroom Faucets and Fixtures (Brushed Finish)
  - ☑ **Raised, Comfort Height White Toilets - all Bathrooms**
    - **Full Width Oversized Height Vanity Mirrors**
    - Clear Glass Windows in all Baths with Frosted Windows Option- per plan

**GHO HOMES** 772.257.1100 | ghohomes.com



Seller reserves the right to make changes or modifications to plans, maps, plan specifications, materials, features, and colors without notice. Prices are subject to change without notice. Maps, plans, landscaping and elevation renderings are artist's conceptions, are not to scale, and may not accurately depict the homes or lots as they are built. This brochure is for illustrative purposes only and not a part of a legal contract. Picture and floor plan shown above is likely not the actual home being offered, but a similar home/model.



# COMMUNITY FEATURES LIST

## Segovia Lake

Created: Sep-27-2020

### Interior Appointments

- **Raised Panel 8 Ft Tall Interior Doors**
- Solid Surface White Window Sills Throughout Living Area
- ☑ **Ceramic Tile Flooring in Foyer, Kitchen, Halls, Great Room or Family Room & Living Room, Dining Room and Utility Room - layouts per plan (GHO Level 1 Selections)**
- Designer Flooring Collection - Choice of Select Oversized Ceramic Floor Tile
- Wall-to-Wall Carpet in Choice of Designer Colors in all Bedrooms and Den (GHO Level 1 Selections)

### Interior Design Features

- **Flex Plan Design -- offering many possible options for your lifestyle**
- ☑ **Rounded Interior Wall Corners, Excluding Windows, Doors, Sliding Glass Doors, Bathrooms, Garages, Ceilings and Closets - per plan**
- **Flat Volume Ceilings - Minimum over 9feet High (per plan)**
- Designer Knockdown Texture on Ceilings
- Vinyl Clad Shelving in all Closets - per plan
- **Designer Arches, Niches and Pot Shelves - per plan**
- Air-Conditioned Walk-In Closets - per plan
- ☑ **Designer Two Tone Interior Paint Upgrade - Choice of Select Colors (select one) and White for Trim, Ceiling & Garage**
- **Sherwin Williams Interior Paint - Flat Latex Walls and Ceiling**
- **Sherwin Williams Interior Trim Paint - Promar 200 Semi-Gloss Latex**

### Electrical Specifications

- ☑ **Recessed LED HiHat Lighting in Kitchen, Halls, Covered Entry and Patio**
- ☑ **GHO Smart Panel Includes CAT5e & RG6 for 3 TV locations, 2 phone and 2 data lines, per plan, pre-wired for AT&T or Comcast Service**
- **Ceiling Fan Pre-Wire in all Bedrooms, Den and Great Rooms and Patio**
- **Walk-in Closet LED Lighting - per plan**
- Decorative Rocker Type Switches

**GHO HOMES** 772.257.1100 | ghohomes.com



Seller reserves the right to make changes or modifications to plans, maps, plan specifications, materials, features, and colors without notice. Prices are subject to change without notice. Maps, plans, landscaping and elevation renderings are artist's conceptions, are not to scale, and may not accurately depict the homes or lots as they are built. This brochure is for illustrative purposes only and not a part of a legal contract. Picture and floor plan shown above is likely not the actual home being offered, but a similar home/model.



# COMMUNITY FEATURES LIST

## Segovia Lake

Created: Sep-27-2020

### Energy Efficient & Safety Features

- ✔ **High Efficiency Air Conditioning System - 16 SEER / Straight Cool / Sized Per Home**
  - HVAC AC Filter Access Located at AC Unit or in Adjacent Side-Wall for Easy Access - per plan
- ✔ **NEST Next Generation Learning Thermostat**
- ✔ **Attic Spray Foam Insulation**
  - Energy Efficient R4.1 Concrete Block Wall Insulation
  - Energy Efficient R11 Garage to House Wall Insulation
- ✔ **Dual Pane Low E Coated Glass on Windows / Sliding Glass Doors**
  - ARC Fault Electrical Outlets Per Code
  - Smoke and Carbon Monoxide Detectors per code
- ✔ **Schlage Sense Smart Deadbolt - Entry Door**



**GHO Homes sets a higher standard in appointing our homes. The features that set us apart from other builders are our Ultimate Features - denoted by the check mark icon - which come standard in each of our homes.**

Additional Tailor Made home design options to choose from include built-in entertainment centers, wet bars, screened-in pools and luxurious finishes and upgrades. From flooring to cabinetry and custom room designs, we've made it easy and affordable to realize your dreams.

**GHO HOMES** 772.257.1100 | ghohomes.com



Seller reserves the right to make changes or modifications to plans, maps, plan specifications, materials, features, and colors without notice. Prices are subject to change without notice. Maps, plans, landscaping and elevation renderings are artist's conceptions, are not to scale, and may not accurately depict the homes or lots as they are built. This brochure is for illustrative purposes only and not a part of a legal contract. Picture and floor plan shown above is likely not the actual home being offered, but a similar home/model.