



# COMMUNITY PRICE LIST

Created: Apr-28-2024

## Bent Pine Preserve

### Floorplans

Floorplan	Bed	Bath	Den	Garage	Sq.Ft.	Priced From
<b>Talbot</b>	3	3	Yes	2 Bay	2,532	<b>764,990</b>
<b>Tacoma</b>	3	3	Yes	2+ Bay	2,522	<b>777,990</b>
<b>Tavvo</b>	3	3	Yes	2+ Bay	2,594	<b>783,990</b>
<b>Redmond</b>	3	2.5	Yes	2+ Bay	2,608	<b>794,990</b>
<b>Tavvo Supreme</b>	3	3.5	Yes	2+ Bay	2,746	<b>812,990</b>
<b>Tavvo Signature</b>	4	3.5	Yes	2+ Bay	2,844	<b>819,990</b>

### Inventory Homes

Floorplan	Bed	Bath	Den	Garage	Sq.Ft.	Priced From
<b>Redmond 58</b> 5770 Bent Pine Square, Vero Beach, FL 32967 Lot: 115	3	3.5	Yes	2 Bay	2,768	<b>1,008,786</b>
<b>Redmond 61</b> 5690 Bent Pine Square, Vero Beach, FL 32967 Lot: 105	3	3.5	Yes	2 Bay	2,716	<b>1,036,387</b>

All base prices above include a standard home site in Bent Pine.

Lakefront, oversized and select homesites are limited, unique and will have a lot premium associated.

Not all plans are designed to fit on every homesite. Contact your salesperson for specific lot information.

## To Learn More About These Homes Please Contact

Douglas Jorgenson 772.257.1100 Cell: 561.444.9914 [douglasj@ghohomes.com](mailto:douglasj@ghohomes.com)

**GHO HOMES** 772.257.1100 | [ghohomes.com](http://ghohomes.com)



Seller reserves the right to make changes or modifications to plans, maps, plan specifications, materials, features, and colors without notice. Prices are subject to change without notice. Maps, plans, landscaping and elevation renderings are artist's conceptions, are not to scale, and may not accurately depict the homes or lots as they are built. This brochure is for illustrative purposes only and not a part of a legal contract. Picture and floor plan shown above is likely not the actual home being offered, but a similar home/model.



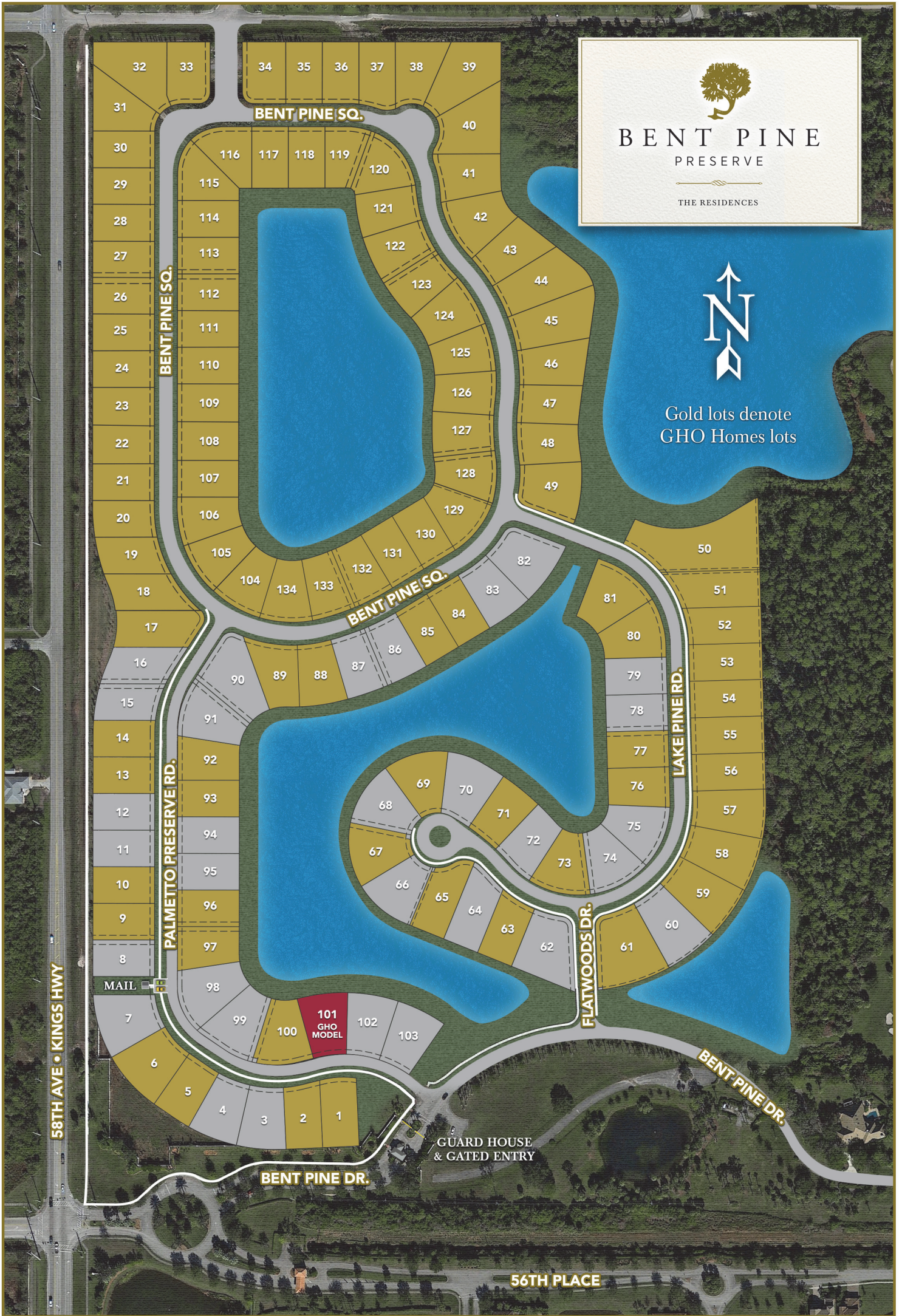


# BENT PINE PRESERVE

THE RESIDENCES



Gold lots denote  
GHO Homes lots



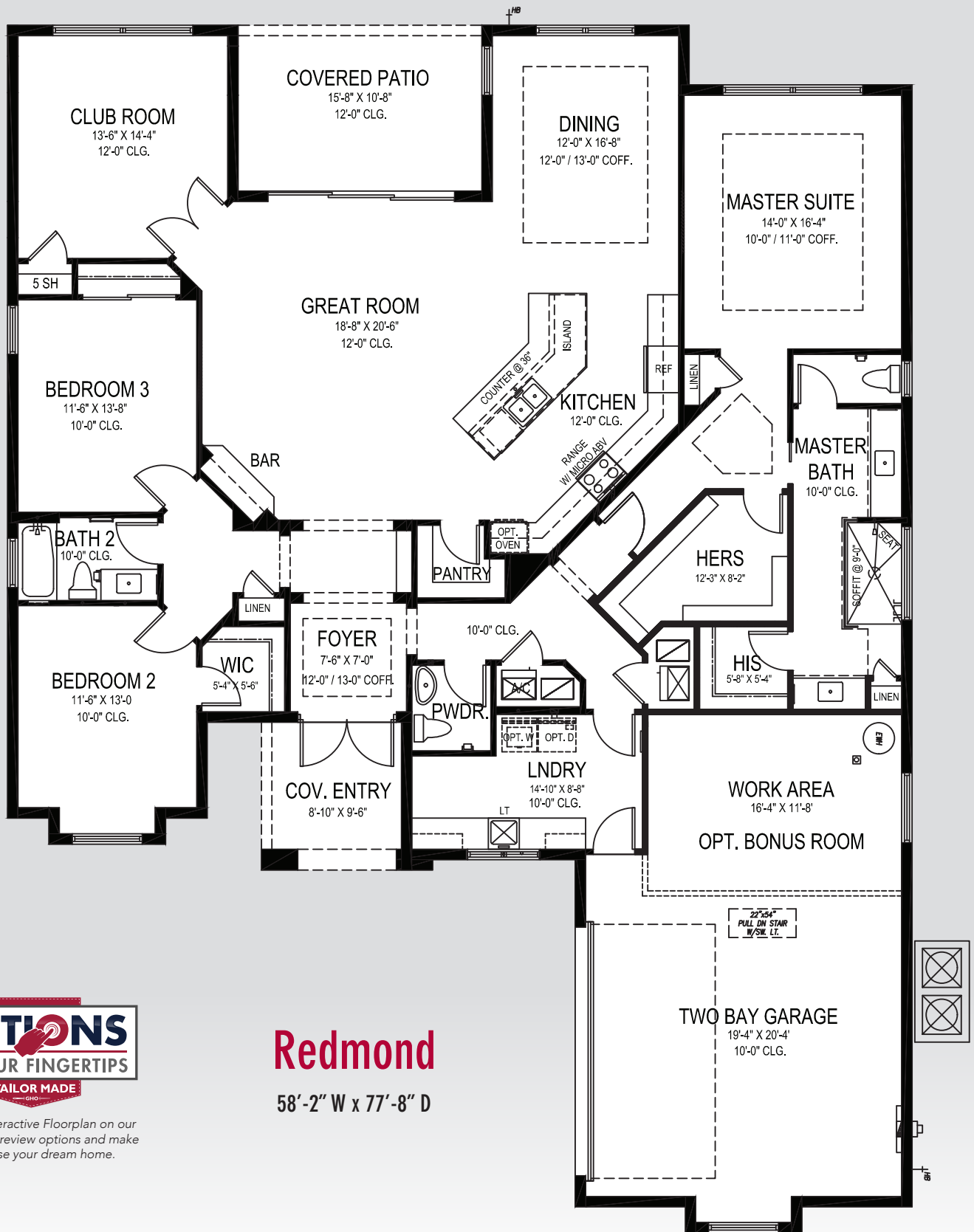
58TH AVE • KINGS HWY

MAIL

GUARD HOUSE  
& GATED ENTRY

56TH PLACE





Visit the Interactive Floorplan on our website to preview options and make our house your dream home.

## Redmond

58'-2" W x 77'-8" D

# GHO HOMES

A GREEN BRICK PARTNER

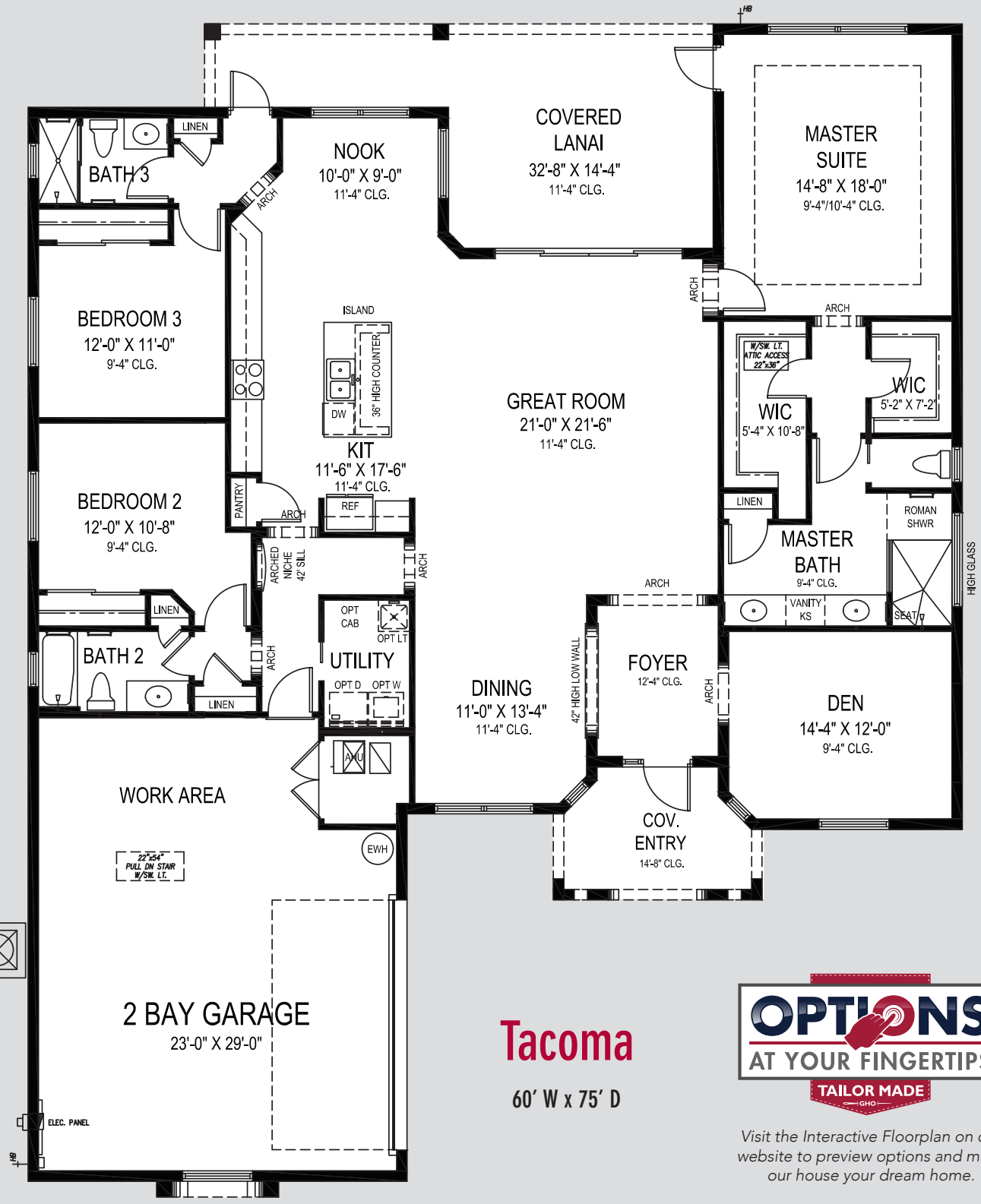
772.257.1100 • GHOHOMES.COM

### APPROXIMATE AREAS

Air Conditioned .... 2,608 Sq. Ft.  
 Covered Entry ..... 86 Sq. Ft.  
 Covered Lanai ..... 167 Sq. Ft.  
 2 Bay Garage ..... 666 Sq. Ft.  
**TOTAL ..... 3,527 Sq. Ft.**



All dimensions, features, specifications and square footages are approximate and subject to change without notice. Maps, plans, landscaping and elevation renderings are artist's conceptions, are not to scale, and may not accurately depict the homes or lots as they are built. © GHO Homes 2019. Revised December 1, 2022.



**Tacoma**  
60' W x 75' D



Visit the Interactive Floorplan on our website to preview options and make our house your dream home.

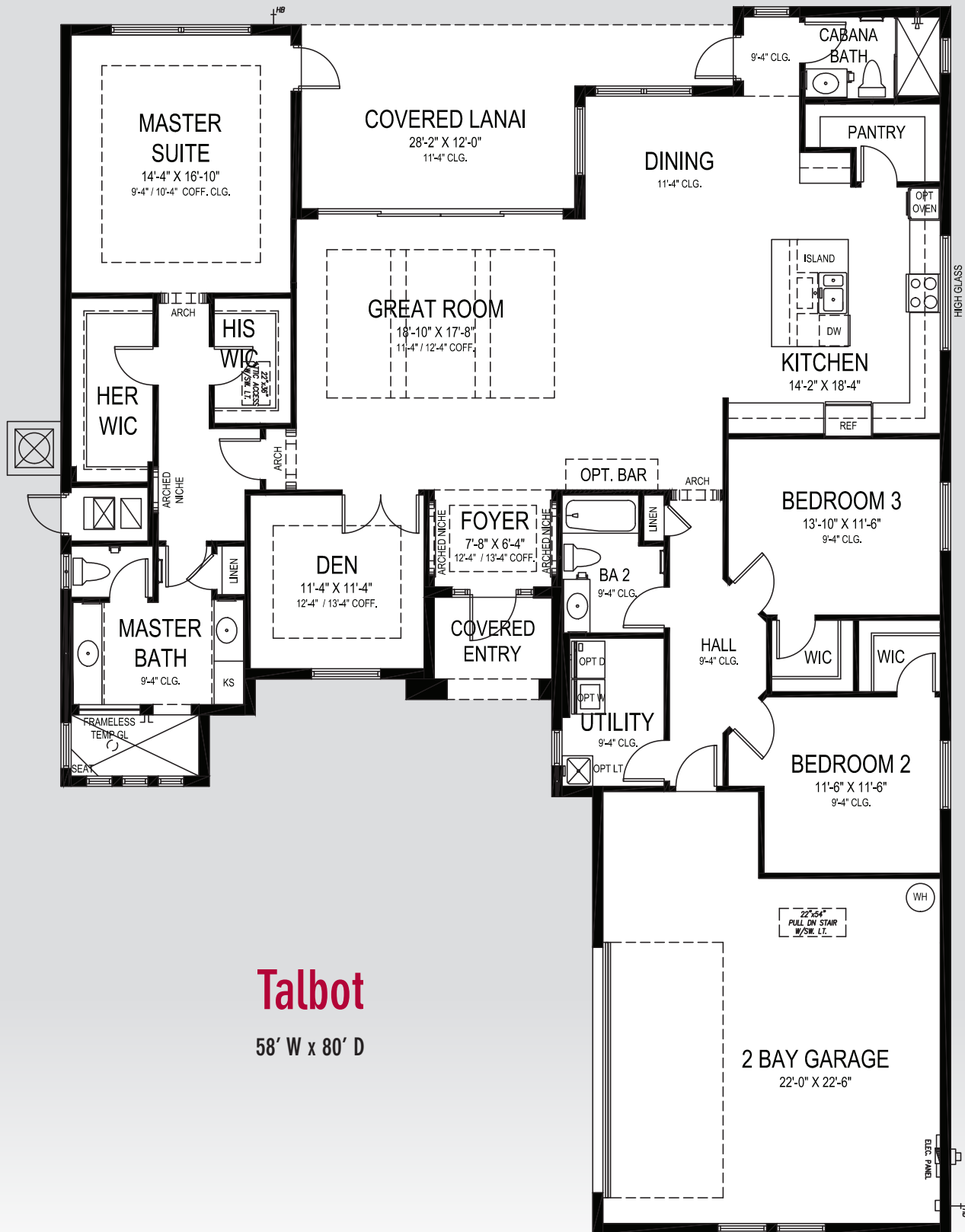
# GHO HOMES

772.257.1100 | ghohomes.com

APPROXIMATE AREAS	
Air Conditioned .....	2,522 Sq. Ft.
Covered Entry .....	98 Sq. Ft.
Covered Patio .....	326 Sq. Ft.
2 Bay Garage .....	689 Sq. Ft.
<b>TOTAL .....</b>	<b>3,635 Sq. Ft.</b>



All dimensions, features, specifications and square footages are approximate and subject to change without notice. Maps, plans, landscaping and elevation renderings are artist's conceptions, are not to scale, and may not accurately depict the homes or lots as they are built.



# Talbot

58' W x 80' D

# GHO HOMES

A GREEN BRICK PARTNER

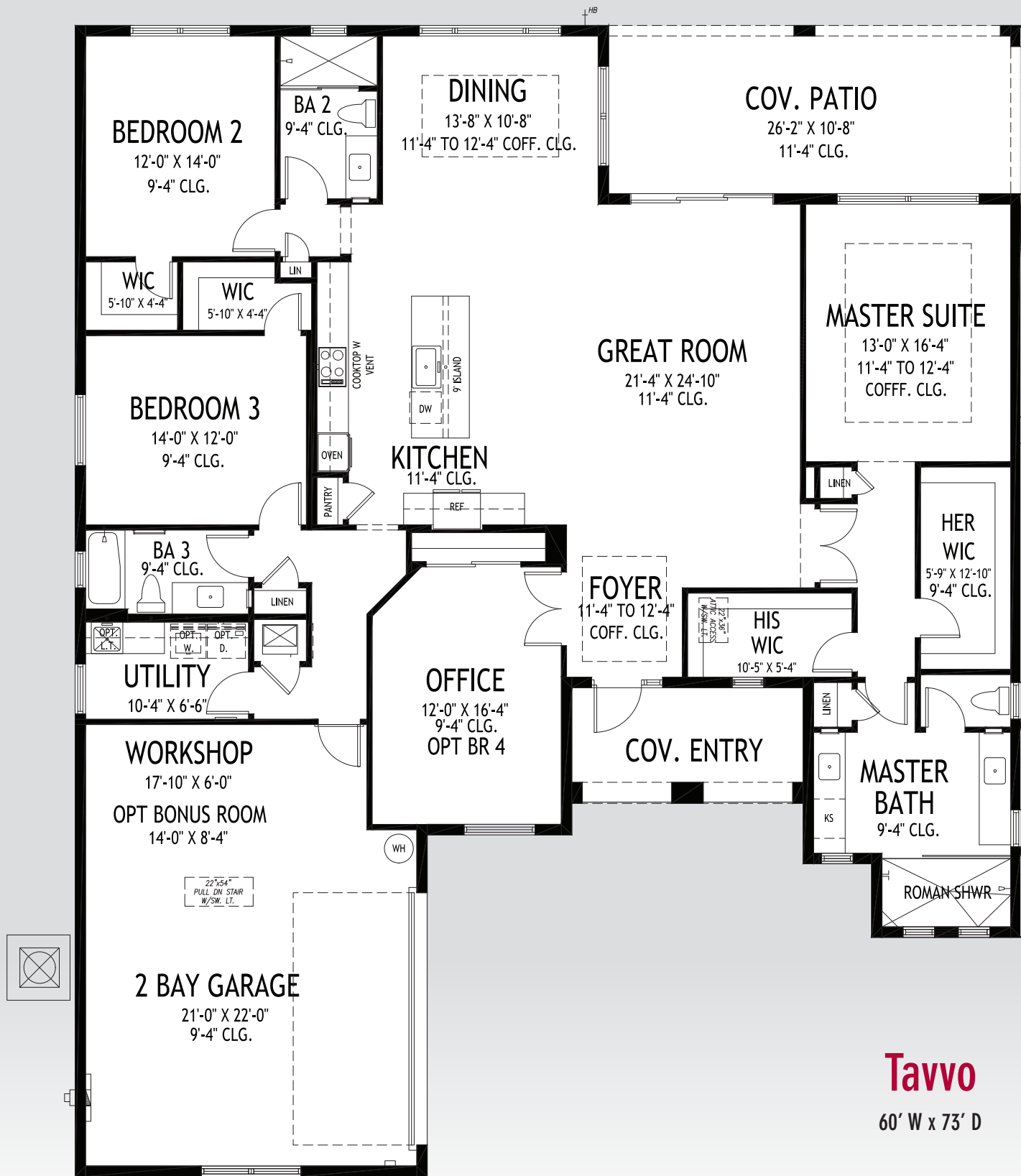
772.257.1100 • GHOHOMES.COM

## APPROXIMATE AREAS

- Air Conditioned .... 2,532 Sq. Ft.
- Covered Entry ..... 54 Sq. Ft.
- Covered Lanai ..... 255 Sq. Ft.
- 2 Bay Garage ..... 602 Sq. Ft.
- TOTAL ..... 3,443 Sq. Ft.**



All dimensions, features, specifications and square footages are approximate and subject to change without notice. Maps, plans, landscaping and elevation renderings are artist's conceptions, are not to scale, and may not accurately depict the homes or lots as they are built. © GHO Homes 2019. Revised June 25, 2019.



## Tavvo

60' W x 73' D

# GHO HOMES

A GREEN BRICK PARTNER

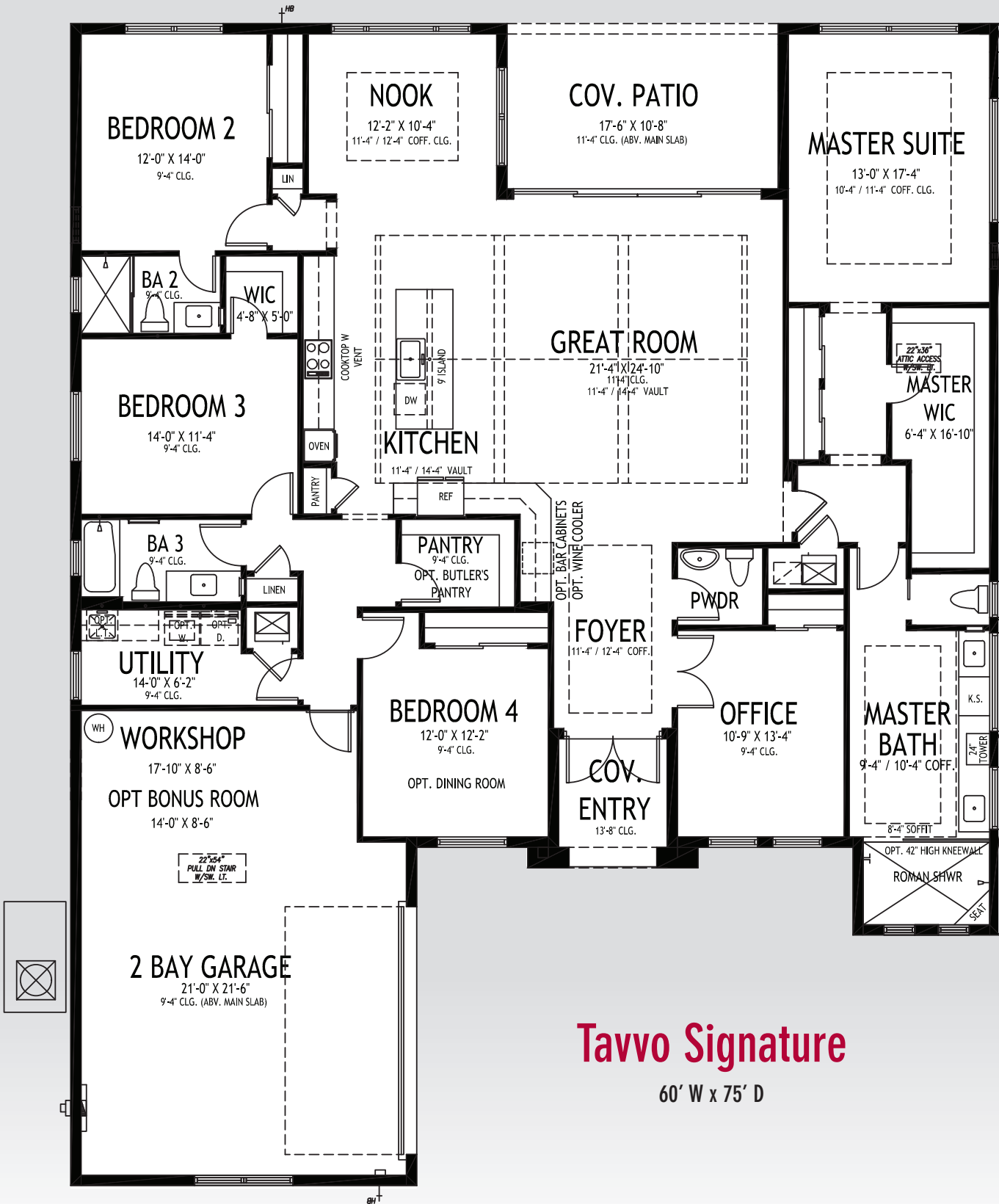
772.257.1100 • GHOHOMES.COM

### APPROXIMATE AREAS

Air Conditioned .... 2,603 Sq. Ft.  
 Covered Entry ..... 108 Sq. Ft.  
 Covered Patio ..... 279 Sq. Ft.  
 2 Bay Garage ..... 615 Sq. Ft.  
**TOTAL ..... 3,605 Sq. Ft.**



All dimensions, features, specifications and square footages are approximate and subject to change without notice. Maps, plans, landscaping and elevation renderings are artist's conceptions, are not to scale, and may not accurately depict the homes or lots as they are built. © GHO Homes 2019. Revised February 7, 2023.



## Tavvo Signature

60' W x 75' D

# GHO HOMES

A GREEN BRICK PARTNER

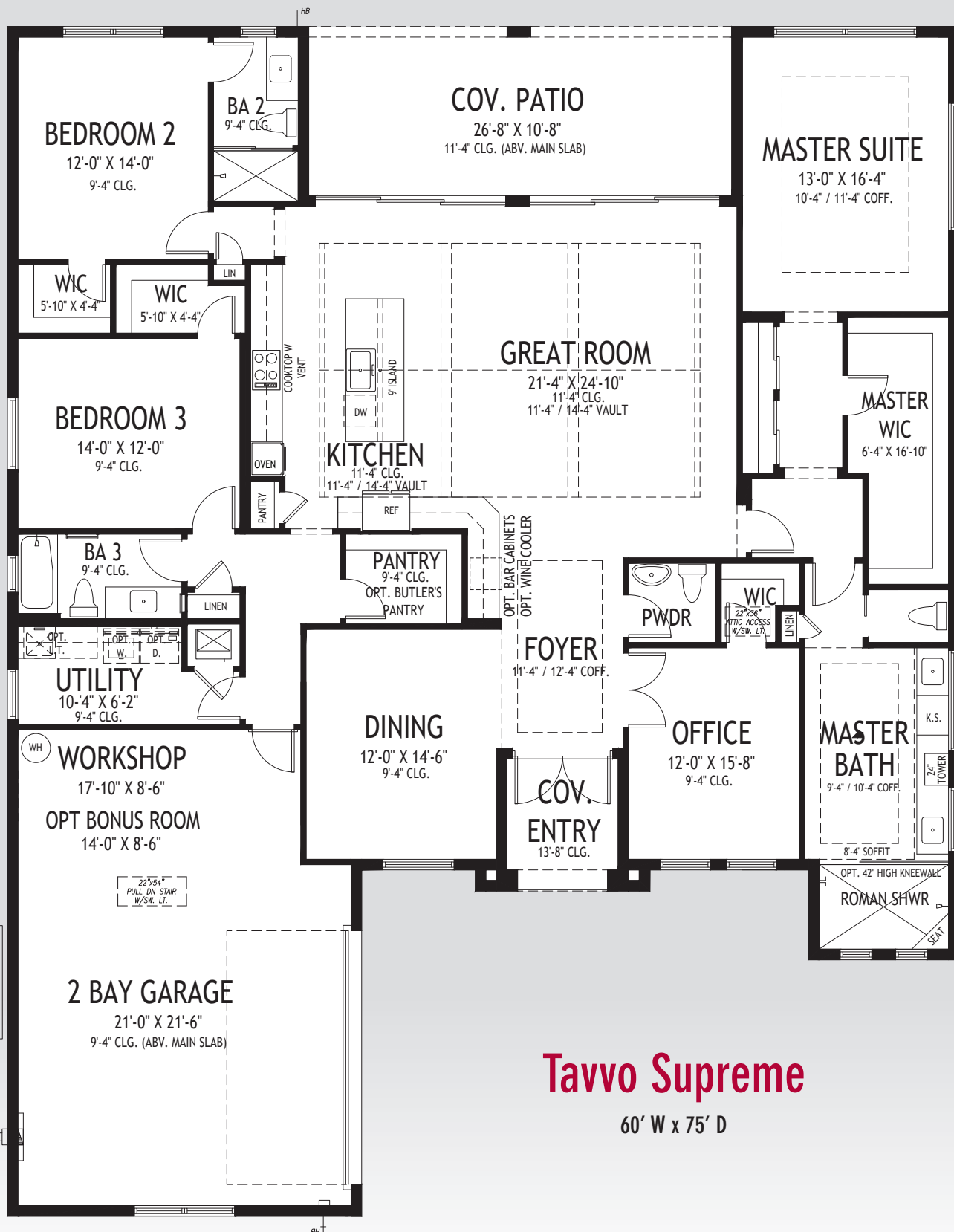
772.257.1100 • GHOHOMES.COM

### APPROXIMATE AREAS

Air Conditioned ....	2,844 Sq. Ft.
Covered Entry .....	64 Sq. Ft.
Covered Patio .....	187 Sq. Ft.
Garage .....	652 Sq. Ft.
<b>TOTAL .....</b>	<b>3,747 Sq. Ft.</b>



All dimensions, features, specifications and square footages are approximate and subject to change without notice. Maps, plans, landscaping and elevation renderings are artist's conceptions, are not to scale, and may not accurately depict the homes or lots as they are built. © GHO Homes 2020. Revised December 27, 2021.



# Tavvo Supreme

60' W x 75' D

# GHO HOMES

A GREEN BRICK PARTNER

772.257.1100 • GHOHOMES.COM

## APPROXIMATE AREAS

- Air Conditioned .... 2,746 Sq. Ft.
- Covered Entry ..... 64 Sq. Ft.
- Covered Patio ..... 284 Sq. Ft.
- Garage ..... 652 Sq. Ft.
- TOTAL ..... 3,746 Sq. Ft.**



All dimensions, features, specifications and square footages are approximate and subject to change without notice. Maps, plans, landscaping and elevation renderings are artist's conceptions, are not to scale, and may not accurately depict the homes or lots as they are built. © GHO Homes 2020. Revised July 12, 2021.





# COMMUNITY FEATURES LIST

## Bent Pine Preserve

Created: Apr-28-2024

### Community Specific Specifications

- Gated Community with 24 Hour Manned Guard Gate
- 18 Hole Championship Golf Course (memberships available)
- Full Golf and Social Club Memberships Available

### "GHO Connectivity" Technology/Convenience Features

- ☑ GHO Smart Panel with 1 CAT6 data line & 4 RG6 cable TV locations, per plan, prewired for AT&T or Comcast
- ☑ Wall Mounted TV Package installed at 60 inches above floor in Master Suite and Great Room, includes Wall Backing w/wire pull chase rings, cable and power outlet at 60 inches above floor and below at standard wall height (locations included in Smart Panel description above)
- ☑ Wifi Enabled Belt Driven Automatic Garage Door Opener
- ☑ NEST Next Generation Learning Thermostat Or Equivalent
- ☑ Nest Hello Video Door Bell - Wifi Ready - Or Equivalent
- ☑ Schlage Smart Deadbolt - Entry Door

### Construction Features

- ☑ Double Row Steel & Concrete Bond Beam
- ☑ Plywood 5/8" (19/32) Roof Sheathing (no particle board)
- Professionally Engineered Roof Trusses with Hurricane Straps
- Concrete Slab on Grade with Steel Reinforcement and Fibermesh Concrete
- Concrete Block Construction with Concrete and Steel Reinforcement
- Concrete Based Textured Exterior Wall Finish
- Underground County/City Electrical, Water and Sewer Connections
- Sentricon Termite Treatment

### Exterior Features

- Concrete Tile Roof System, Choice of Flat or Roll Style and Select Colors
- ☑ Impact Glass - All Windows, Sliders and Glass Doors - all openings
- Wind Rated Garage Doors
- Paver Driveway, Front Walks and Rear Covered Patio Floor
- ☑ Fiberglass Raised-Panel 8' Front Doors with Clear Impact Glass Single Lite Sidelites - per plan
- Professionally Designed Landscaped Package and Floratam Sod

**GHO HOMES** 772.257.1100 | ghohomes.com



Seller reserves the right to make changes or modifications to plans, maps, plan specifications, materials, features, and colors without notice. Prices are subject to change without notice. Maps, plans, landscaping and elevation renderings are artist's conceptions, are not to scale, and may not accurately depict the homes or lots as they are built. This brochure is for illustrative purposes only and not a part of a legal contract. Picture and floor plan shown above is likely not the actual home being offered, but a similar home/model.



# COMMUNITY FEATURES LIST

## Bent Pine Preserve

Created: Apr-28-2024

- Automatic Underground Irrigation System, Irrigation Water supplied by Community Master Pump
- Exterior Garden Hose Connections (2)
- Exterior GFI Electric Outlets (2)
- Sherwin Williams Acrylic Exterior Paint on Exterior Walls of Home

### Utility Room and Garage

- ☑ White Shaker Style Utility Room cabinets w/ Drop in Laundry Tub
- ☑ Shaker Style Laundry Room Upper Cabinets Utility Room - per plan
- ☑ Granite/Quartz Counter Top on Base Cabinets in Utility Room (Level 1)
  - Drop Down Stairs to Attic
- ☑ LED Lighting Provided for Garage and Utility Room
- ☑ Garage Floor Concrete Finished Covering - Epoxy with Color Flake

### Gourmet Kitchens

- ☑ Kitchen Cabinets w/ Dove Tail Drawers & Soft-close Drawers. Dove Tail & Soft Close Not Standard in Painted Cabinet Options - (GHO Level 2 Selections)
- ☑ Kitchen Cabinets feature Crown Molding, Glass Doors, Light Valance and Upgraded Layout - per plan
- ☑ Granite or Quartz Kitchen Counter Top, with 4 inch back splash, layout per plan (GHO Level 1 Selections)
  - Kitchen Faucet: Pull Out Spray - Stainless Steel Finish
  - Food Waste Garbage Disposal with Air Switch
  - Stainless Steel Undermount Kitchen Sink 70/30 Split
  - Stainless Steel Finish Appliance Package
- ☑ Whirlpool French Door 25cf Refrigerator
- ☑ Whirlpool Dishwasher
- ☑ Whirlpool Over the Range Microwave
- ☑ Whirlpool Double Wall Oven
- ☑ Whirlpool 30 inch Electric Glass Cooktop
  - Flooring: Ceramic Tile in Kitchen and Breakfast Rooms per plan
- ☑ Natural finish wood shelving in Pantry

### Luxury Bathrooms

**GHO HOMES** 772.257.1100 | ghohomes.com



Seller reserves the right to make changes or modifications to plans, maps, plan specifications, materials, features, and colors without notice. Prices are subject to change without notice. Maps, plans, landscaping and elevation renderings are artist's conceptions, are not to scale, and may not accurately depict the homes or lots as they are built. This brochure is for illustrative purposes only and not a part of a legal contract. Picture and floor plan shown above is likely not the actual home being offered, but a similar home/model.



# COMMUNITY FEATURES LIST

## Bent Pine Preserve

Created: Apr-28-2024

- ☑ **Raised Height Bath Vanity Cabinets (GHO Level 2 Selections)**
- ☑ **Granite or Quartz Bath Vanity Top (GHO Level 1 Selections) with Rectangular White Under-Mount Sink - all baths**
- ☑ **Oversized Walk-In Showers - per plan**
  - **Built in Shower Seat in Master Shower, Ceramic Tile Finish - per plan**
  - **Clear Glass Shower Enclosures- per plan**
- ☑ **Drop in Acrylic Master Bath Tub with Tile Tub Deck Top, Per Plan**
- ☑ **Ceramic Tile Bathroom Floors with Walls and Shower Floors - Choice of Deco Wall Tile Packages with Listello Features all Baths (GHO Level 1 Selections)**
- ☑ **Raised, Comfort Height White Toilets - all Bathrooms**
- ☑ **Bathroom Faucets and Fixtures (Brushed Finish)**
  - **Full Width Oversized Height Vanity Mirrors**
  - **Clear Glass Windows in all Baths with Frosted Windows Option- per plan**
- ☑ **Square Shower Drains in all Bathrooms**

### Interior Appointments

- ☑ **8 Ft. Two-Panel Interior Doors with Square Top, Oversized Door Casing and Baseboard**
- ☑ **Crown Molding in Foyer, Great Room/Family Room, Kitchen, Living Room, Dining Room and Master Bedroom - perimeter of room only/ layout per plan**
- ☑ **Built-In Bar Base Cabinets with Granite or Quartz Counter Top, on select plans (Match Kitchen - per plan)**
  - **Solid Surface White Window Sills Throughout Living Area**
- ☑ **Ceramic Tile Flooring in Foyer, Kitchen, Halls, Great Room or Family Room & Living Room, Dining Room and Utility Room - layouts per plan (GHO Level 1 Selections)**
  - **Designer Flooring Collection - Choice of Select Oversized Ceramic Floor Tile**
  - **Wall-to-Wall Carpet in Choice of Designer Colors in all Bedrooms and Den (GHO Level 1 Selections)**

### Interior Design Features

- ☑ **Rounded Interior Wall Corners, Excluding Windows, Doors, Sliding Glass Doors, Bathrooms, Garages, Ceilings and Closets - per plan**
  - **Designer Knockdown Texture on Ceilings**
  - **Air-Conditioned Walk-In Closets - per plan**
- ☑ **Sherwin Williams Two Tone Interior Paint Upgrade - Choice of Select Colors (select one) and White for Trim, Ceiling & Garage**
- ☑ **Natural finish wood open shelving in all closets, per plan**

**GHO HOMES** 772.257.1100 | ghohomes.com



Seller reserves the right to make changes or modifications to plans, maps, plan specifications, materials, features, and colors without notice. Prices are subject to change without notice. Maps, plans, landscaping and elevation renderings are artist's conceptions, are not to scale, and may not accurately depict the homes or lots as they are built. This brochure is for illustrative purposes only and not a part of a legal contract. Picture and floor plan shown above is likely not the actual home being offered, but a similar home/model.





# COMMUNITY FEATURES LIST

## Bent Pine Preserve

Created: Apr-28-2024

### Electrical Specifications

- Recessed HiHat Lighting in Kitchen, Halls, Covered Entry and Patio
- Ceiling Fan Pre-Wire in all Bedrooms, Den, Great Rooms and Patio
- Pre-Wire for Foyer Hanging Light
- Walk-In Closet Lighting - per plan
- Decorative Rocker Type Switches

### Energy Efficient & Safety Features

**Lennox High Efficiency Air Conditioning System Including Multi Speed Air Handler - Target 16 SEER Efficiency\*/ Straight Cool / Sized Per Home**

- HVAC AC Filter Access Located at AC Unit or in Adjacent Side-Wall for Easy Access - per plan

**Attic Spray Foam Insulation**

- Energy Efficient R4.1 Concrete Block Wall Insulation
- Energy Efficient R11 Garage to House Wall Insulation

**Dual Pane Low E Coated Impact Glass on Windows / Sliding Glass Doors**

- ARC Fault Electrical Outlets Per Code
- Smoke and Carbon Monoxide Detectors per code



GHO Homes sets a higher standard in appointing our homes. Our Ultimate Features - denoted by the check mark icon - set us apart from other builders and come standard in every GHO Home.

Additional Tailor Made home design options to choose from include built-in entertainment centers, wet bars, screened-in pools, and luxurious finishes and upgrades. From flooring to cabinetry and custom room designs, we've made it easy and affordable to realize your dreams. \*Overall system efficiency minimum 15 SEER, based on individual equipment available and sized per each home.

**GHO HOMES** 772.257.1100 | ghohomes.com



Seller reserves the right to make changes or modifications to plans, maps, plan specifications, materials, features, and colors without notice. Prices are subject to change without notice. Maps, plans, landscaping and elevation renderings are artist's conceptions, are not to scale, and may not accurately depict the homes or lots as they are built. This brochure is for illustrative purposes only and not a part of a legal contract. Picture and floor plan shown above is likely not the actual home being offered, but a similar home/model.